

Using the Sample Land Viewer: Nebraska Statewide TNTAtlas®

via the DVD.

Run Entirely from the DVD

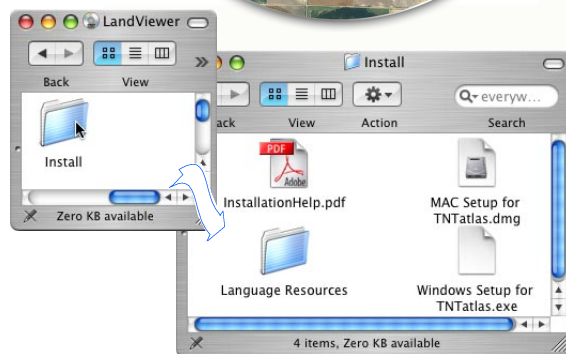
Windows: If you permit programs to auto-start in Windows, this TNTAtlas will automatically run from the DVD and nothing will be installed. If you have auto-start disabled, you manually start this atlas by double-clicking on the Start TNTAtlas - Windows file.

Mac OS X: Apple's OS does not permit auto-starting from a CD or DVD. To manually start this atlas in Mac OS X, simply double-click on the TNTAtlas icon, and it will run completely from the DVD, and nothing will be installed.



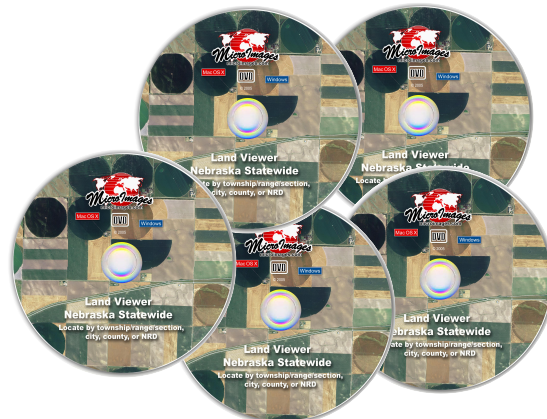
Installation Is an Option

You can install either the Windows or Mac OS X version of the TNTAtlas software from this DVD for faster startup times. The attached delivery card notes that you have to download the installable version of TNTAtlas—this is no longer necessary! The Install directory on the DVD contains both versions as well as installation instructions and help.



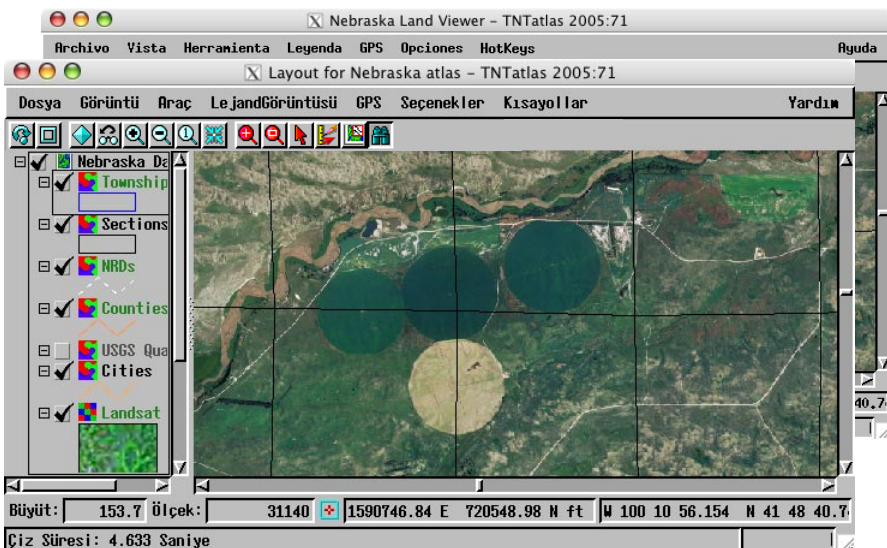
Permission Is Granted to Duplicate

Permission is hereby granted to duplicate and distribute this copyrighted DVD in its entirety as long as the contents of the DVD are not altered in any manner without prior written permission from MicroImages, Inc.



TNTAtlases Are Multilingual

If you install this atlas, its operating interface can be in any of 27 languages, such as shown here in Turkish and Spanish. The data content of this atlas is in English but could also be presented in any language.



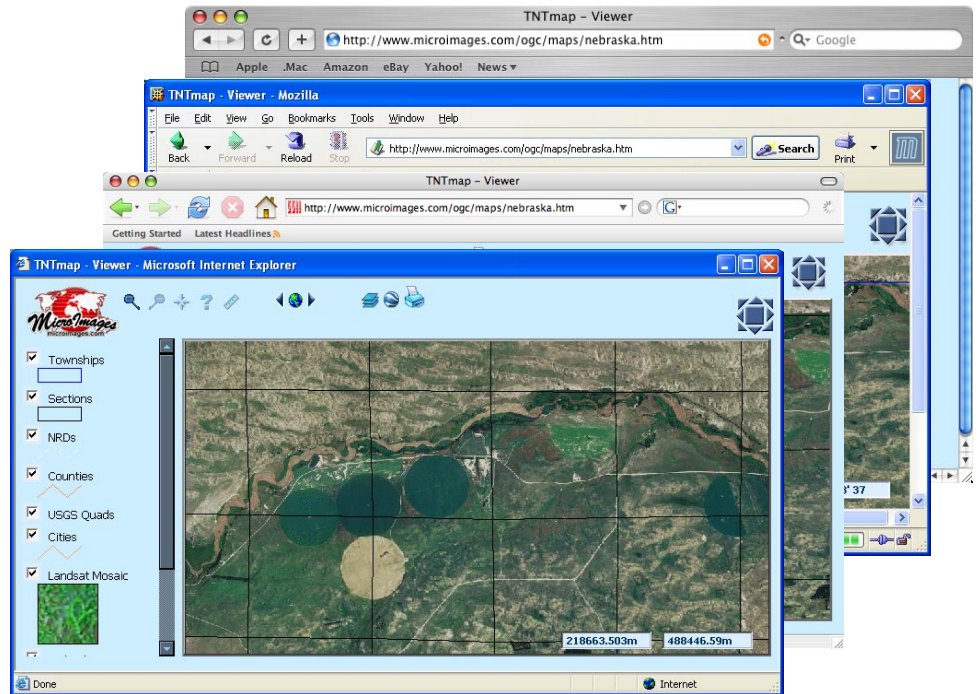
(over)

Using the Sample Land Viewer: Nebraska Statewide TNTAtlas®

via the Internet.

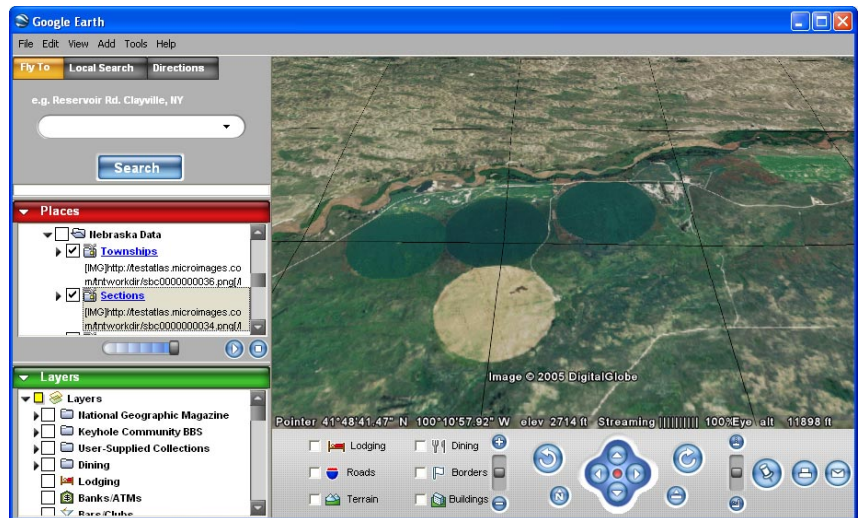
View in Explorer, Firefox, Mozilla, or Safari

This Nebraska Land Viewer atlas content can be viewed over the Internet using your browser. Simply go to www.microimages.com/ogc and follow the instructions.



Overlay onto Google Earth

This Nebraska Land Viewer atlas content can be used as temporary local overlay layers in Google Earth in 3D perspective. Simply go to www.microimages.com/ogc and follow the instructions.



Combine with Maps and Images from Other Servers

The Nebraska, Lincoln, and many other atlases available from www.microimages.com/ogc use MicroImages' commercial TNTserver software. This product complies with a standard open protocol called a Web Map Service (WMS). As a result, you overlay the layers from these atlases with maps and images from other governmental and commercial web sites that also support a WMS. To do this you will need to use a WMS compliant browser, such as MicroImages' TNTmap Builder (www.microimages.com/ogc), Intergraph's OGC WMS Viewer (www.wmsviewer.com/main.asp), or Cadcorp's Map Browser (www.cadcorp.com/products_geographical_information_systems/map_browser.htm).

