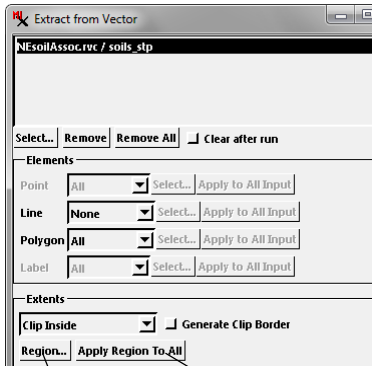


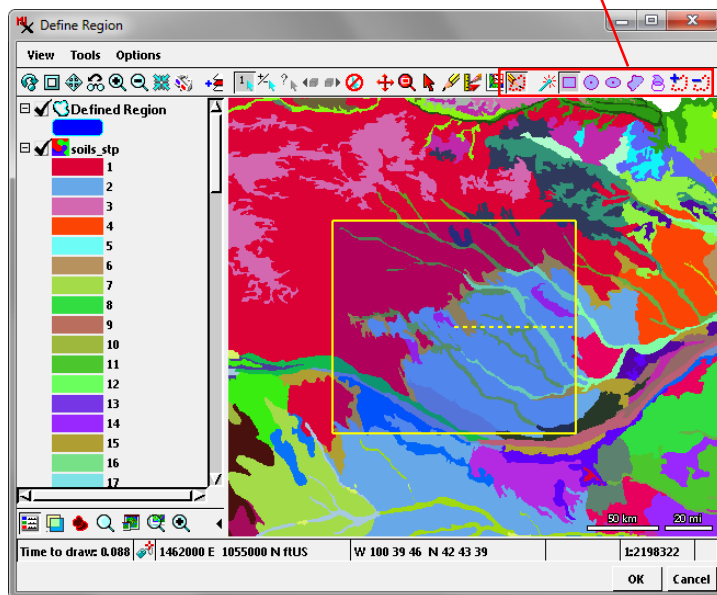
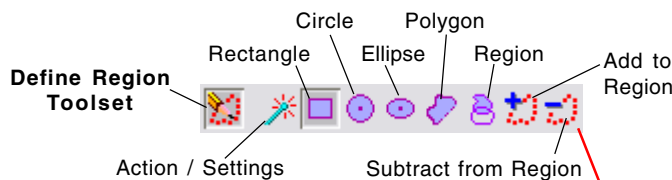
# Define Region for Extraction

In the Extract from Vector process (Geometric / Extract from / Vector) in TNTmips, the Define Region window is used to specify an extraction area. To open the Define Region window, press the Region pushbutton in the Extents box on the Extract to Vector window (see illustration to the right). The Region pushbutton is shown when appropriate selections have been made from the Extents menu, such as Partially Inside, Completely Inside, Clip Inside, and so on. (No extraction area is required when Full or Separate by Polygons is selected on the Extents menu.)



Press to open the Define Region window

Press to apply the specified region to all input objects

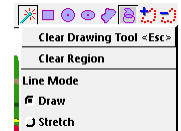


When the Define Region window opens, the Define Region toolset is turned on by default in the window's toolbar (see illustration above). You can use the tools in this toolset to create a simple or composite outline of the extraction area by drawing one or more shapes and/or by choosing one or more region objects. Press the OK button to use the extraction area.

## Drawing Shapes to Define a Region

Icon buttons in the Define Region toolset are shown on the toolbar to the right of the Define Region icon button. Rect-

angle, Circle, Ellipse, and Polygon drawing tools are provided. You can use any of these drawing tools alone or in combination to draw and add shapes to the Defined Region, which is added as a layer in the Define Region window. After drawing a shape, right-click or press the Add to Region icon button to add the shape, which is then shown with a partially-transparent blue fill color. Press the Subtract from Region icon button to remove the area outlined by the active shape from the Defined Region.

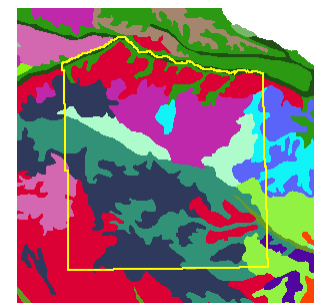
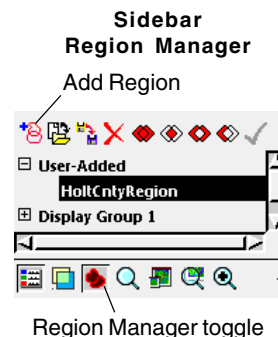


Pressing the Action / Settings icon button opens a menu with options to Clear Drawing Tool (which clears the current tool graphic) and to Clear Region (which clears the entire Defined Region). This menu also lets you set the Line mode for the Polygon drawing tool (Draw or Stretch).

## Adding a Previously-Saved Region

You can also add one or more previously-saved region objects to the defined region by taking the following steps:

- Press the Region icon button in the Define Region toolbar. This activates the Region Manager in the Define Region window sidebar if it is not already active (see illustration below).
- Press the Add Region icon button in the Region Manager to open the Select Region Objects window.
- Navigate to the desired Project File, select the region object, and press OK on the selection window. The region is then listed in the User Added section of the list in the Region Manager, and its outline is shown as a graphic in the View.
- Right-click or press Add to Region in the Define Region toolbar to add the outlined area to the Defined Region.



## Use Current View Extents

You can also zoom in using the Define Region window and use the current View extents as the Defined Region. In the sidebar Region Manager, expand the Display Group 1 listing and click on the View 1 entry (see illustration to the right). Then right-click or press Add to Region in the Define Region toolbar.

