

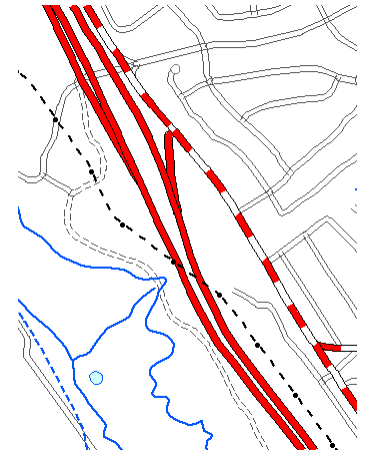
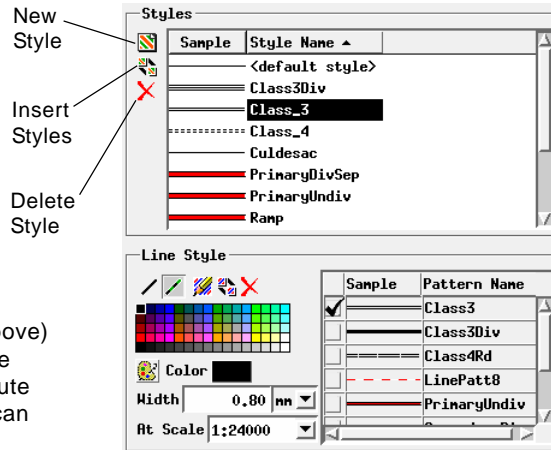
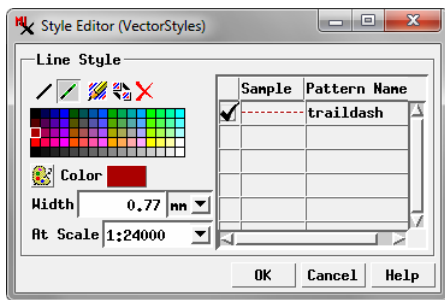


Creating Styles for Lines

The Style Editor controls for lines allow you to create and save styles to use in displaying line elements in vector, CAD, TIN, and shape objects. Line elements can be styled as solid lines of various colors and widths or using more complex line patterns that can include multiple parallel solid, dashed, or dotted elements as well as crossing elements. Line styles can be created and used when you style lines using the All Same, By Attribute, and By Theme options and can also be referenced and used in style scripts with the By Script option.

-  **Solid:** Turn on the Solid icon button to create a style with a solid line drawn with the specified color and width.
-  **Pattern:** Turn on the Pattern icon button to use a line pattern. Turning on this button activates the *Create or Edit Pattern* and *Insert Patterns* icon buttons. Line patterns you have created or selected are also shown in the list on the right side of the Line Style controls. Turn on the checkbox to the left of the pattern that you wish to use for the current style.




The Style Editor for styling lines All Same (above) lets you create a single line style. In the Style Assignment window for styling lines By Attribute (right) or in the standalone Style Editor, you can create multiple line styles.


The basic controls for creating and editing line styles are the same regardless of the context and are illustrated for the All Same style option above left; in this context only one style can be created. These basic controls are described below.

In the Style Assignment window for By Attribute styling and in the standalone Style Editor (Tools / Edit Styles) you can create and save multiple styles. In these contexts a Styles box above the Line Styles controls provides a list of the styles with the name and sample for each (see illustration above right). The style list always includes a <default style> entry based on the current All Same style for lines. Press the New Style icon button to the left of the list to create a new style based on whichever style is currently selected in the list. New styles are automatically assigned a default name, which you can edit in the list to provide a more meaningful name. (If you name the style to match the attribute value of the elements it is designed for, the Style Assignment window provides an option to automatically assign styles by name; see the Technical Guide entitled *Manual Style Assignment*). Changes made with the Line Style controls apply to whichever style is currently selected in the list. You can use the Insert Styles icon button to navigate to and select styles from another style object to copy to the list. The Delete Style icon button deletes the selected style.

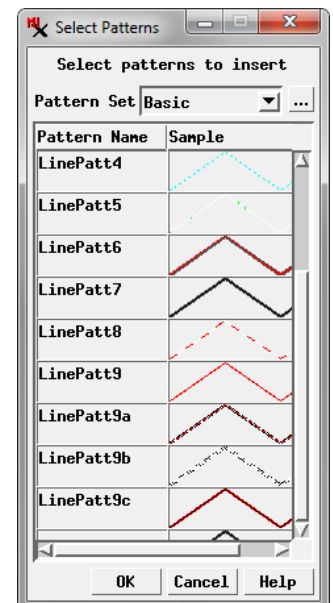
Line Style Controls

Icon buttons at the top of the Line Style box allow you to choose either a solid line style or to use a pattern, and in the latter case to create, choose, or delete patterns. Controls are also provided to set the line color and width.

 **Create or Edit Pattern:** Press this icon button to open the Line Pattern Editor, which lets you create simple dashed and dotted lines or more complex line styles with multiple parallel lines and crossing elements. See the TechGuide entitled *Line Pattern Editor* for details.

 **Insert Patterns:** Pressing the Insert Patterns icon button opens the Select Patterns window, which you can use to copy line patterns to the current style object. This window by default shows a collection of Basic line patterns that are provided with TNTgis. You can press the Browse icon button to the right of the Pattern Set menu to navigate to and select any style object in any Project File as the source for the line patterns to show in the window.

The list in the Select Patterns window includes the pattern name and a graphic sample. Left click on an entry in the scrolling list to select it (as shown by black highlighting). Hold down the Shift key while left-clicking again to select a contiguous range of patterns, or hold down the Ctrl key while

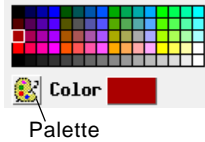


(continued)

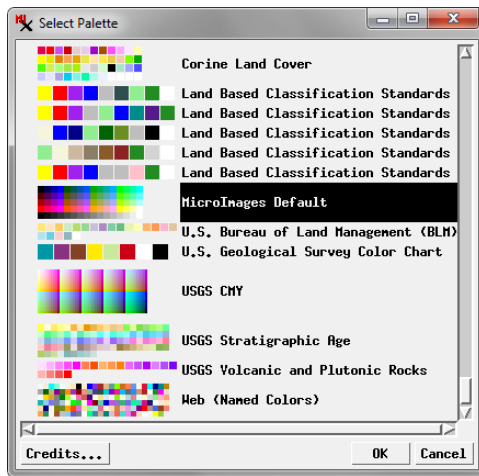
left-clicking to toggle selection on or off for an entry. When you have highlighted one or more patterns in the list, press OK to complete the selection. The selected patterns are copied to the current style object and are added to the pattern list in the Line Style controls.

Delete Pattern: Press the Delete Pattern icon button to delete a pattern that you have highlighted in the pattern list in the Line Style controls. (Highlight a pattern by left-clicking on its sample or pattern name field in the list.) The deleted pattern is removed from the current style object.

Color Controls: You can choose a color for a solid line style by left-clicking on a color tile in the palette shown in the Line Style controls. The selected color is shown on the Color button below the palette. To choose colors from a different palette, press the

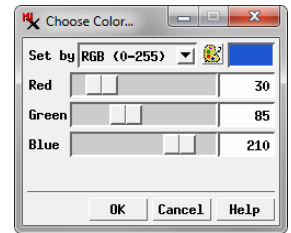


Palette icon button. The Select Palette window which opens shows a graphic list of available discrete color palettes. Left-click on the desired palette in the list and press the OK button to show this palette in the Line Style box.



You can also create a custom color by left-clicking on the color button, which opens the Choose Color window. The *Set by* menu in this window determines the type of controls that are shown. The menu provides a choice of color models that you

can use for specifying a color, including RGB (0-100), RGB (0-255), HIS, and others. Adjust the color sliders or enter values in the numeric fields and press OK to set the custom color, which is then shown on the color button in the Line Style controls.



Line patterns can include components set to use a *variable* color. Variable-color pattern components are drawn in the color selected for the style in the Line Style controls. Thus a pattern using variable-color components can be used for several styles with a different color set for each style. The style color selection has no effect on line pattern components that were set to use a fixed color.

Width: Line width in the View window can be specified in inches (in), millimeters (mm), pixels (px), or points (pt), as set by the menu to the right of the Width field. Enter the desired width value in this field. Changing the units selection automatically updates the value in the width field to maintain the same line width. A value of 0 results in lines being drawn with a width of one screen pixel at any scale.

At Scale: The At Scale setting determines the scale at which the specified width applies. You can enter a desired map scale fraction or scale number (e.g., 1:36000 or 36000) in the field or press the arrow icon button to the right of field to open a menu from which you can choose Fixed, Design, or Current. The Current option sets the scale field to the current scale of the associated View window. The Design option sets the style to use the design scale specified for a group or print layout in which the geometric object is used. With these options lines will appear wider or thinner as you zoom the view in or out. With the Fixed option lines are drawn with the same width on screen regardless of the scale of the view.

