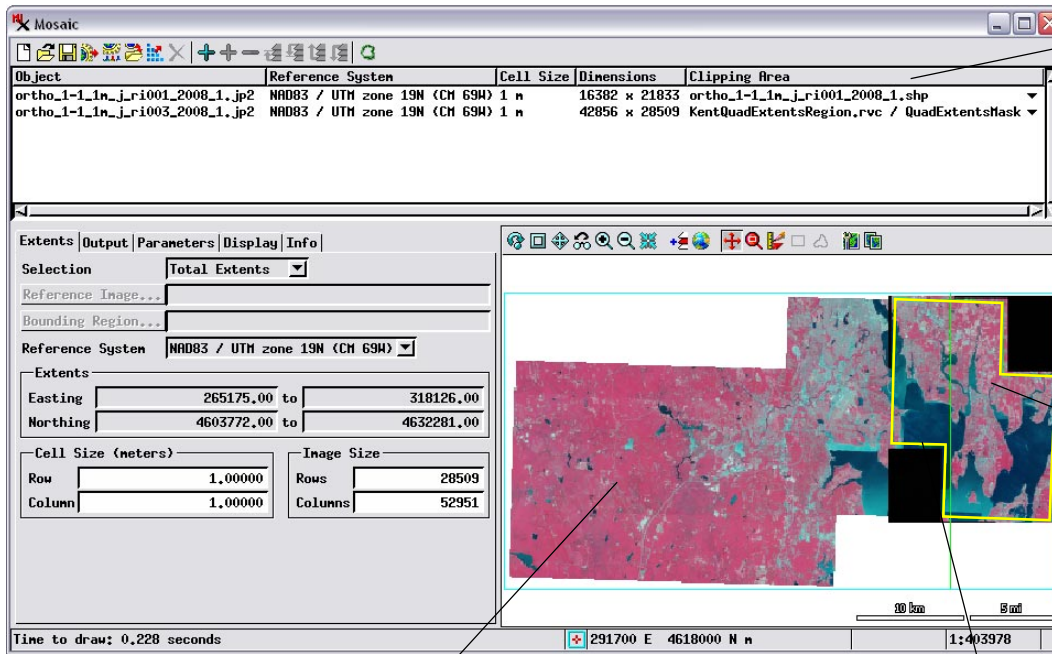
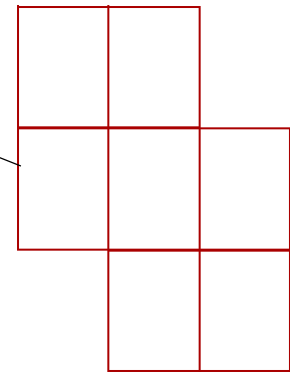


Mosaic Selected Areas

The Mosaic process in TNTmips (Image / Mosaic) allows you to use all or a selected portion of each input image (raster object or set of component rasters) to form the output mosaic. You can choose a previously-created object (region, vector, shape, or coincident binary raster mask) to define the clipping area to be used from each input image. If you choose a vector or shape object that includes more than one polygon/shape, the outline of the union of these polygons (i.e., the outer boundary excluding islands) is used to define the clipping area. You can choose objects to define clipping areas for all input images or only for selected input images. You can also use standard GeoToolbox drawing tools to manually draw polygons for any areas in the Mosaic window's view and save them as region objects to use to define clipping areas, as shown on the next page.



The Clipping Area column in the Object list shows the name of the spatial object you have chosen to define the clipping area for that input image. The default entry in this field is All if you haven't specified a clipping area.

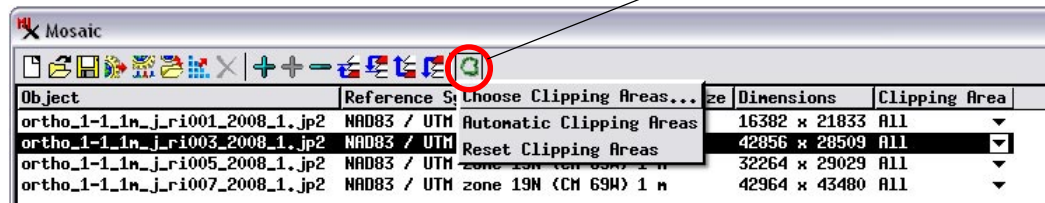
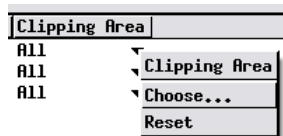


The image on the left in this mosaic layout has a clipping area defined by a binary raster object, which is automatically applied as a mask to make the masked-out (deselected) areas transparent in the Mosaic window's view pane. The full rectangular extents of the input image continue to be outlined in color in the view.

The input image on the right in this mosaic layout has a clipping area defined by a shape object (displayed in the illustration above right) made up of several shapes (polygons) outlining map quadrangles; only the outer boundary of this set of shapes is used to define the selected area. When you define the clipping area using a shape, vector, or region object, the extents outline of that input image is modified automatically to show only the clipping area you have defined (outline shown in yellow in this illustration for clarity).

Choose Clipping Area for a Single Input

Clipping Areas icon button

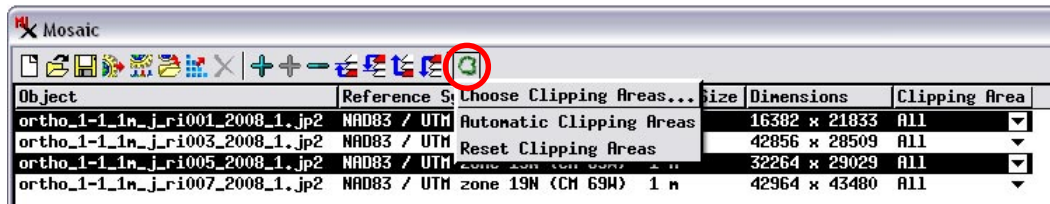


To choose the object to define the clipping area for a particular input image, click on the Clipping Area field for that image's entry in the input list and select Choose from the pop-up menu, as illustrated above left. The standard Select Object dialog then appears to allow you to choose a region, vector, shape, or coincident binary raster object to define the clipping area for that particular input image.

Alternatively, you can highlight an image's entry in the input list by left-clicking on any field other than Clipping Area; the selected entry is highlighted with a black background color. Then press the Clipping Areas icon button (circled in red in the above illustration) on the toolbar and select Choose Clipping Areas from the dropdown menu to open the Select Objects dialog.

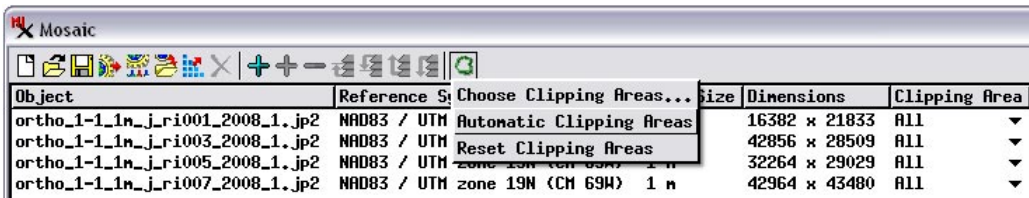
(over)

Choose Clipping Areas for Multiple Inputs



You can also choose objects to define clipping areas for multiple input images in one operation. Press the <ctrl> key while left-clicking on the desired images in the input list to highlight multiple entries (or shift-click to highlight consecutive list entries). Then press the Clipping Areas icon button and select *Choose Clipping Areas* from the dropdown menu. A Select Object dialog then appears to allow you to select a clipping area object for each highlighted input image. If no input images are highlighted when you press the Clipping Areas icon button and select *Choose Clipping Areas*, you are prompted to select a clipping area object for each of the input images.

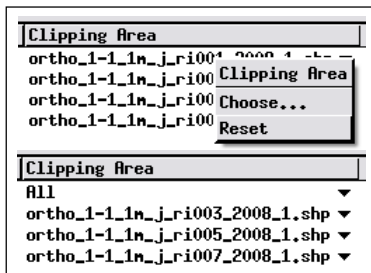
Automatically Add Processing Areas



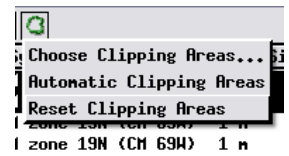
An automatic procedure for adding clipping areas is available when the input images you are mosaicking are files in image formats supported for direct use in TNTmips (JP2/GeoJP2, TIFF/GeoTIFF, MrSID, among others) and the clipping area for each image is defined by a shape file with the same filename as the image file. Press the Clipping Areas icon button and choose *Automatic Clipping Areas* from the menu. The selection procedure looks for the matching shapefile in the same directory as its associated image; if found, it is automatically added to the Clipping Area field for the image. If the matching shapefile is not found in the image directory, you are prompted to choose a directory to search.

Clear Clipping Areas

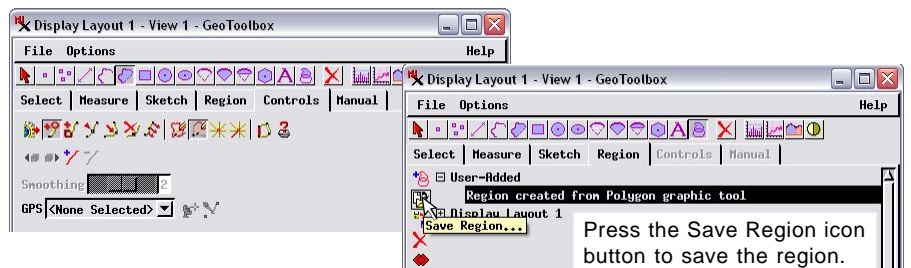
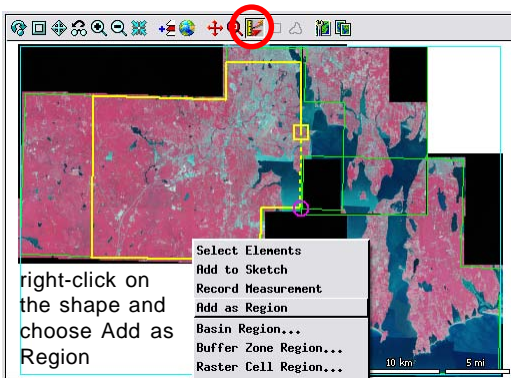
To clear a clipping area and thus revert to using the full extent of an input image, click on the Clipping Area field for that image's list entry and choose *Reset* from the popup menu.



To clear clipping areas for more than one input image at a time, select the images in the input list, press the Clipping Areas icon button, and choose *Reset Clipping Areas* from the dropdown menu. If no images have been selected in the list, this action clears all clipping areas.



Using the GeoToolbox to Draw and Save Regions to Define Clipping Areas



To manually define a clipping area for an input image, press the GeoToolbox icon button at the top of the Mosaic window's view (circled in red in the illustration to the left). You can use the drawing tools in the standard GeoToolbox dialog to draw the desired area, add the shape as a temporary region, then use the Region panel to save the region to a Project File. You can then use the procedures described above to choose that saved region object to define the clipping area for an input image. Use of the GeoToolbox to define regions is described in the Tutorial booklet entitled *Interactive Region Analysis*.