

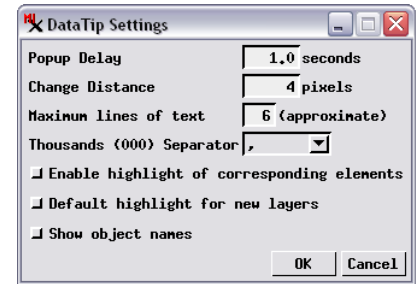
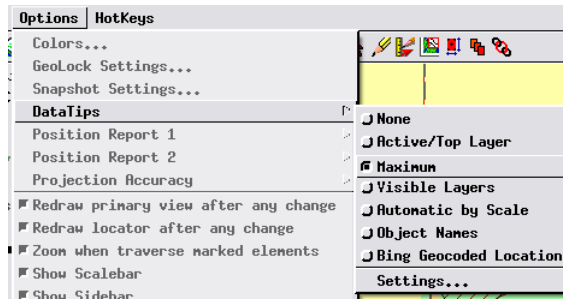
View Window DataTip Options

Designers and viewers of geospatial data in the TNT products can set the content and style of DataTip information to be shown for individual layers using the Layer Controls windows opened from the Display Manager or the View sidebar. These settings are stored with the other display settings for each object. However, viewers can also set general viewing options for DataTips in the View window using the Options / DataTIPS menu. This menu provides toggle options that allow you to quickly change the amount and type of information shown in DataTips, and a Settings option that opens a DataTip Settings window providing further controls. Settings made from the DataTIPS menu and DataTip Settings window are not data-specific, but rather are retained for the display interface used in any TNT process.

DataTip Settings Window

The DataTip Settings window (illustrated in the top right corner of this page) provides a number of controls governing DataTip behavior and content. You can set the time lag between stopping pointer movement and the appearance of the DataTip using the Popup Delay field. The Change Distance field sets the minimum movement distance (in pixels) from the previous DataTip location required to allow appearance of a new DataTip.

The number of lines of DataTip text that can appear is limited by the value in the *Maximum lines of text* field. The initial default value for this field is 20 lines. Because a single display layer may produce multiple lines of DataTip text (through a multiline string expression field or when object and layer names are shown), the number of text lines actu-



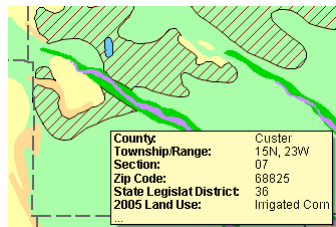
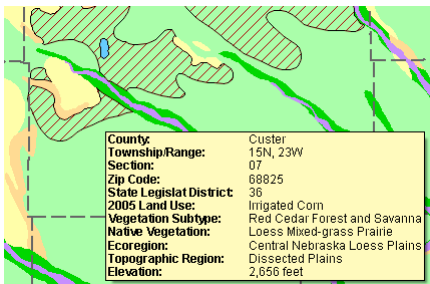
The DataTIPS submenu on the View window's Options menu (above left) provides toggle options that allow viewers to quickly modify the amount and content of DataTip information shown, and a Settings option that opens a DataTip Settings window providing further controls.

ally shown may exceed this maximum; multiline entries that begin before the line limit is reached are shown in full even if the result exceeds the set limit. DataTips that are truncated due to this setting end in a line showing the ellipsis symbol (...) as an indication that a line limit has been imposed (see illustrations at the bottom left of this page).

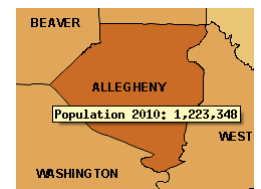
The *Thousands (000) Separator* menu lets you choose from among several standard characters used as separators in numeric values. The choices are <none>, comma, period, and <space>. The selected separator is automatically inserted into any numeric values in the DataTip (see illustrations at the bottom right of this page).

The *Enable highlight of corresponding elements* toggle button lets you control whether elements at the cursor location are highlighted in the View when the DataTip is shown. When this option is turned on, element highlighting is enabled for any layer in which it has been turned on in the layer controls. If the toggle is off, element highlighting is disabled for all layers.

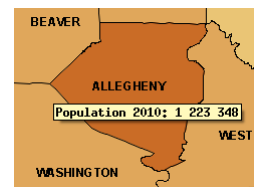
(over)



DataTip using the Maximum option with the *Maximum lines of text* value in the DataTip Settings window set to 6. DataTips that omit lines due to this limit end in a line showing an ellipsis (...).



The *Thousands (000) Separator* menu in the DataTip Settings window lets you choose the separator character used for numerical values in DataTips. The choices are <none> (above left), comma (above right), period (below left), and <space> (below right).



DataTip from View with 11 geospatial layers using the Maximum option on the DataTIPS menu with the *Maximum lines of text* value in the DataTip Settings window set to 20. Entries are included for all 11 layers.

The *Default highlight for new layers* toggle in the DataTip Settings window sets the element highlight behavior of geometric layers that are added to a View for the first time (and thus do not have pre-existing display settings). If this toggle is turned on, element highlighting is enabled; if the toggle is off, element highlighting is disabled. This setting is saved with the object's display parameters.

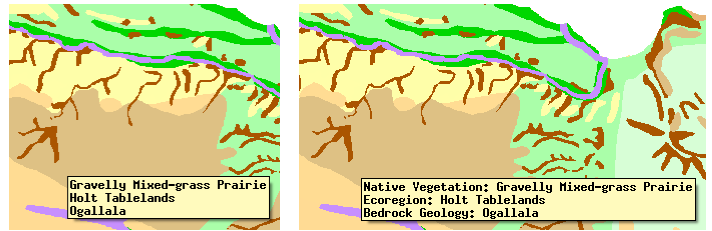
The *Show object names* toggle in the DataTip Settings window adds the object name for each layer to the beginning of each DataTip entry (see illustration to the right). This option is useful when no explanatory prefixes have been set in the display settings for the individual layers.

DataTips Menu Options

The toggle options on the DataTips submenu let you control which layers contribute information to the DataTip and also to choose alternate information to show in the DataTip. The menu choices None, Active/Top Layer, Maximum, Visible Layers, and Automatic by Scale determine which layers provide information for the DataTip. When you choose Active/Top Layer, the DataTip shows information only from one layer; the default is the layer that is currently active (shown in bold in the layer list). In a layout, in which groups can have different spatial extents, the cursor may be outside the extents of the active layer and group. In that case, the top layer/group at the cursor location provides the DataTip information.

The Maximum menu option shows DataTip information from all layers, including visible, hidden, and off-by-scale layers, up to the limit set by the *Maximum lines of text* setting described on the previous page. The Visible menu option shows DataTip lines only for layers that are currently visible; this setting excludes layers that are hidden or off by scale (see illustrations to the right). The Automatic by Scale option shows information from all layers that are manually set as visible and uses the current map scale to determine whether to include layers with visibility controlled by map scale. The scale range used to determine inclusion in the DataTip is wider than the layer visibility scale range. Information is included from a scale-controlled layer as long as the current view scale is no more than 100 times greater the maximum scale ratio (zoom-in limit) or 10 times less than the minimum scale ratio (zoom-out limit). For example, a layer that is visible at scales between 1:100,000 and 1:500,000 would be included in the DataTip over the range 1:1,000 to 1:5,000,000.

In displays with multiple layers that do not cover the same areas, you can use the DataTip to identify which layer(s) exist at the cursor location. When you choose the Object Name option from the DataTips menu, the DataTip shows the layer name, file name, and object name for each layer at that location (subject to the current maximum lines setting).



DataTip showing polygon attributes from three vector layers. No explanatory prefix has been set for the individual vector layers (left). In the illustration on the right, the *Show object names* option has been turned on in the DataTip Settings window, so the object name for each layer is added as a prefix for each DataTip entry.

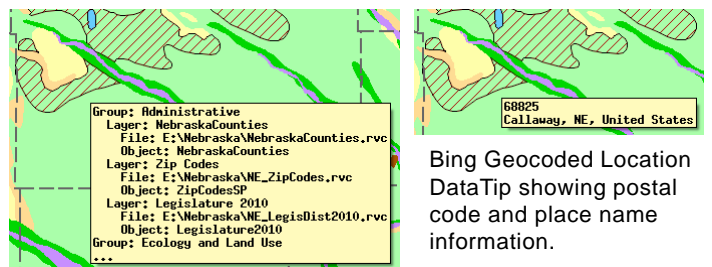
View sidebar layer list for a display layout with 11 layers. A number of the layers are currently hidden (visibility checkbox off). The Township/Range and Sections layers are not visible at the current view scale (note green color for layer names). DataTips for this layout are shown to the right using different DataTips submenu options.

DataTip for the display layout using the Maximum option. An entry is shown in the DataTip for each layer, including those that are hidden or off by scale.

DataTip for the display layout using the Visible Layers option. Layers that are manually hidden or off by scale are not included in the DataTip.

In a layout, group names are also included in the object name DataTip (see illustration below left).

The Bing Geocoded Location option uses the Bing Locations service (which requires an Internet connection) to show location information for the cursor position (see illustration below right). Available information may include street address, postal code, name of populated place, county/region, and country. The specificity of the location data provided varies with the scale of the view.



Object name DataTip showing group, layer, file, and object names.

Bing Geocoded Location DataTip showing postal code and place name information.