

# Synchronize External GeoViewer

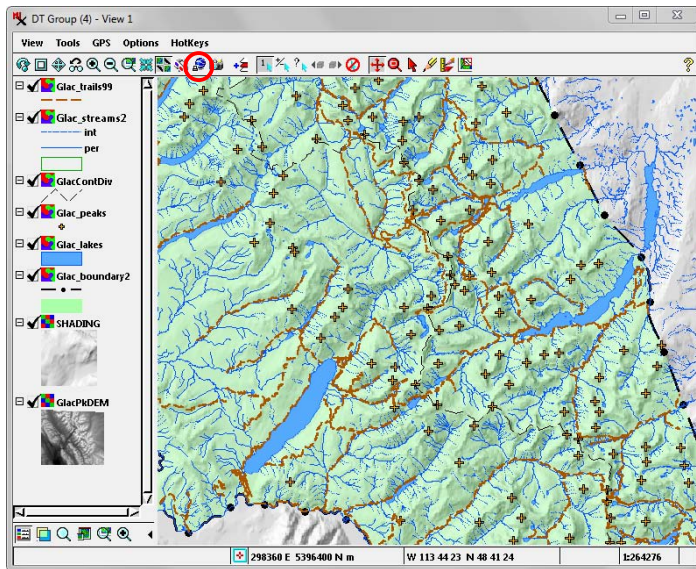
The Synchronize External GeoViewer icon button on 2D and 3D Perspective views in TNTmips allows you to open any of three web geoviewers (Google Earth, Google Maps, and Microsoft Bing Maps) to show the same area displayed in your TNT View window. Pressing this icon button opens a menu from which you can choose the geoviewer to use.

When you choose Google Earth, the desktop Google Earth application is launched, zooms to show the displayed area, and automatically updates to match changes in your TNT view. A small Google Earth Synchronization window provides you the option to show in Google Earth the view center (marked by a small MicroImages symbol), the group extents (as a rectangular outline), and the view extents (for 2D views only). The View Scale slider in this window lets you vary the scale (viewpoint distance) in Google Earth relative to the TNT view.

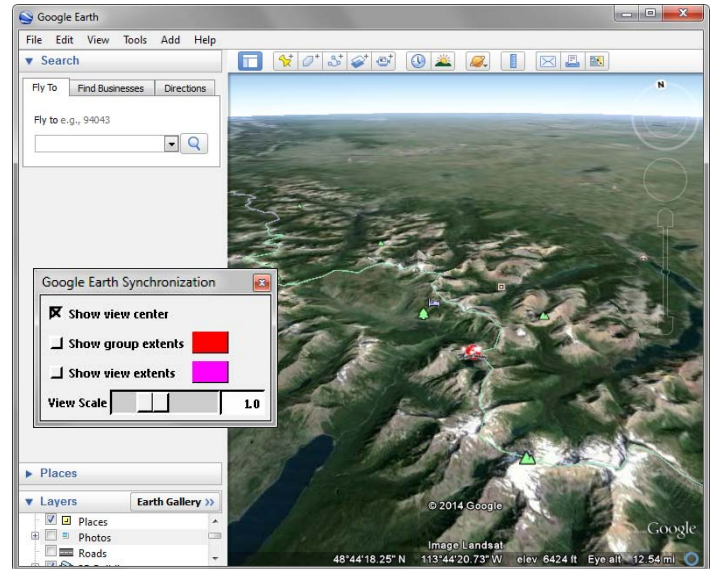
Each time you adjust the position and zoom of your TNT view, a tnt.kml file is recreated and used to update the Google Earth view. If you have not turned off prompting in Google Earth, you are asked if you want to reload this file after each adjustment.

If you have launched Google Earth from a 3D Perspective view, its view direction and orientation are also replicated in Google Earth. Changes in view position and orientation in the TNT 3D view are conveyed to Google Earth when the solid view is redrawn (changes in wireframe mode do not update Google Earth).

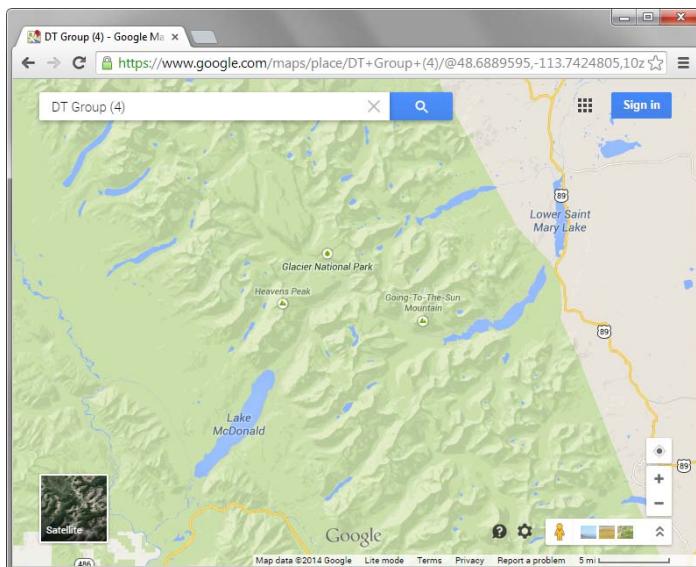
When you launch Google Maps or Microsoft Bing maps from the Synchronize External GeoViewer menu, your default web browser opens to show the matching area in the selected geoviewer. The Google Maps and Bing Maps views do not automatically update to mirror changes in your TNT view.



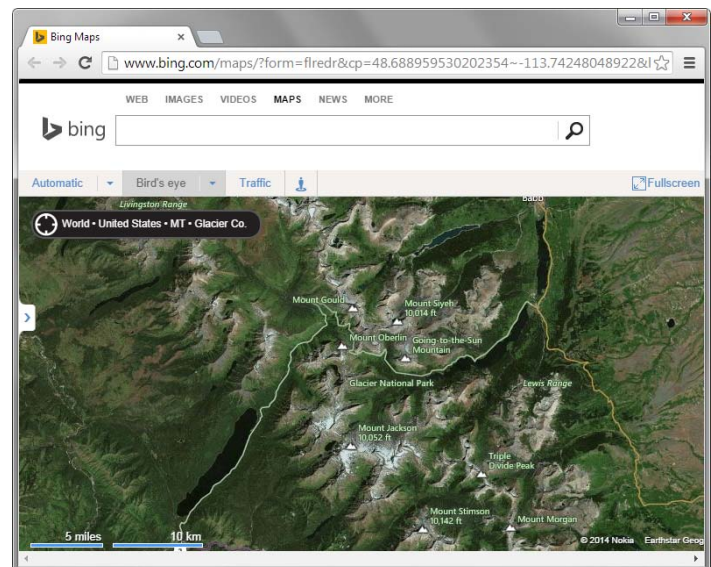
TNTmips View window synchronized with...



Google Earth



Google Maps



Bing Maps