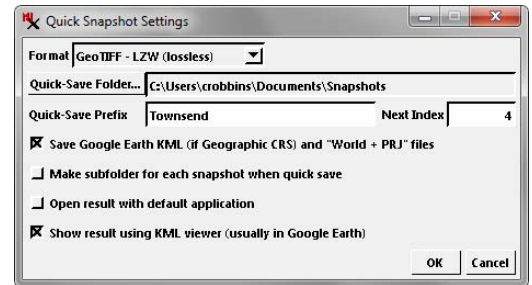
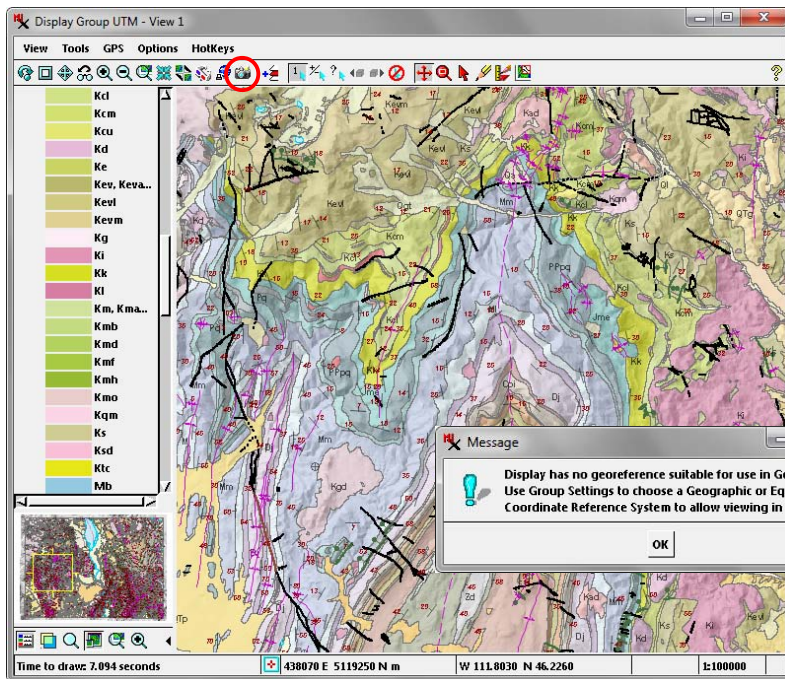


# Quick Snapshot for Google Earth

You can use the Quick Snapshot feature in any View window in TNTmips, TNTedit, or TNTview to create screen snapshots that can be viewed immediately in Google Earth. In the Quick Snapshot Settings window, choose a GeoTIFF, TIFF, JPEG, or PNG format option and turn on the *Save Google Earth KML (if Geographic CRS) and "World + PRJ" files* toggle (see illustration to the right and the Technical Guide entitled *Spatial Display: Quick Snapshot of View Contents*). To have the snapshot automatically displayed in Google Earth, turn on the *Show result using KML viewer (usually in Google Earth)* option in the Quick Snapshot Settings. Otherwise, you can navigate to your designated snapshot folder and double-click on the KML file to open Google Earth zoomed to the area of your snapshot.

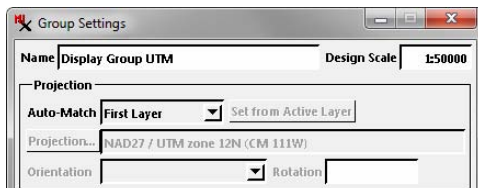


A KML file requires latitude/longitude coordinates using the WGS84 datum. If your View uses the WGS84 / Geographic coordinate reference system (CRS), a KML file is created along with the other auxiliary georeference files.

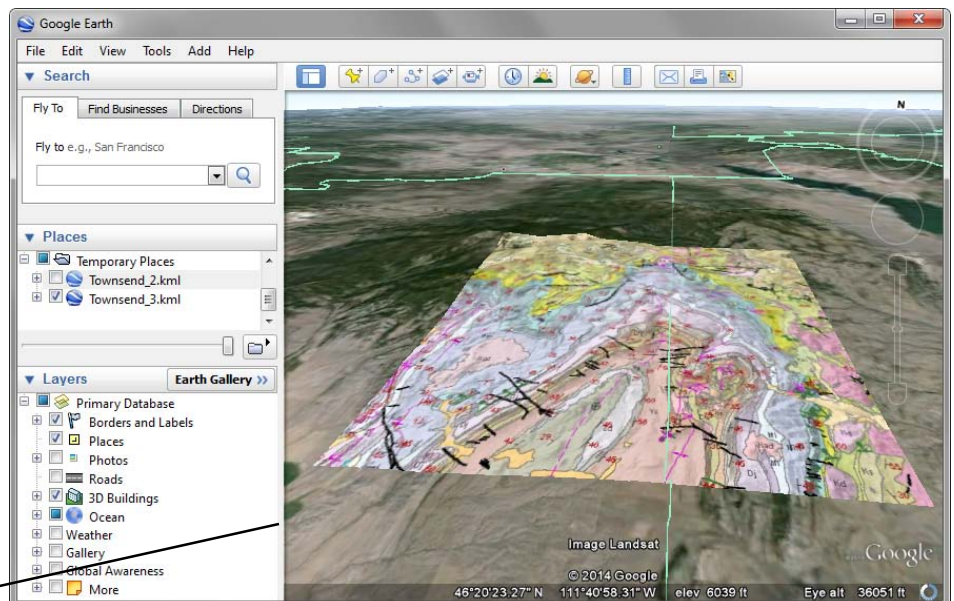
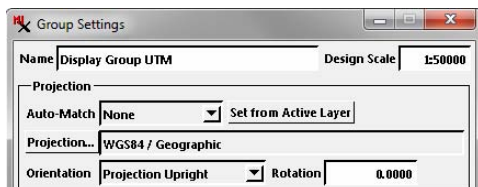


If the View uses a different CRS, a KML file is still produced if the area of the view is small and its extents can be converted to latitude/longitude with a resultant distortion error less than the ground dimension of one screen pixel. If not, no KML file is created and a message window (below left) is shown to warn that the View georeference is not suitable for use in Google Earth. There is no need to change the data in the View; however; you just need to change the CRS for the display and repeat the snapshot operation.

You can change the CRS for a View of a single group using the Group Settings window, as illustrated below left. In the Projection controls, simply select None from the Auto-Match menu, then press the Projection button and choose WGS84 / Geographic. In a layout, you need to make this change for the first group with a non-local CRS.



To change the group CRS to be suitable for conversion to KML, open the Group Settings window, select None from the Auto-Match menu, then press the Projection button and choose WGS84 / Geographic.



View snapshot displayed in Google Earth.