




# Set View Position with Places Panel


The View window sidebar provides an optional Places panel that allows you to quickly change the center position of the View to a new location in several ways. This panel is turned on using an icon button in the toolbar at the bottom of the sidebar. Other sidebar panels are described in the Technical Guide entitled *View Window Sidebar*.

Three icon buttons at the top of the Places panel are used to set one of the following modes for specifying the new View center:

-  Change View Position: enter map coordinates
-  Microsoft Bing Maps Service: enter an address or place name
-  Saved Locations: choose a previously-saved location (see the Technical Guide entitled *Save Locations with Places Controls*)

Each mode provides a different set of additional controls in the Places control panel.

### Change View Position

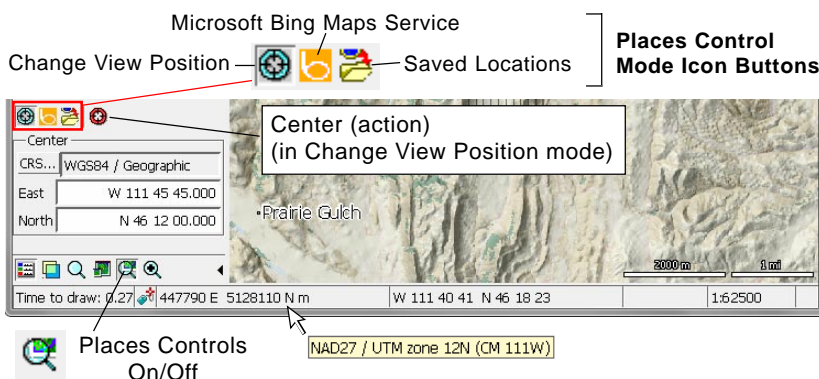
The Change View Position mode allows you to specify a new center position by entering map coordinates in the East and North fields in the Places panel. After entering the coordinates, press the Center icon button  to the right of the Places mode icon buttons (see illustration at top right of this page).

The coordinate reference system (CRS) for the entered coordinates is shown above the coordinate fields; the group CRS is shown by default. You can choose any coordinate reference system for entering center coordinates by pressing the CRS pushbutton. This selection only applies to coordinate entry, and does not alter the CRS used for displaying the geodata layers.

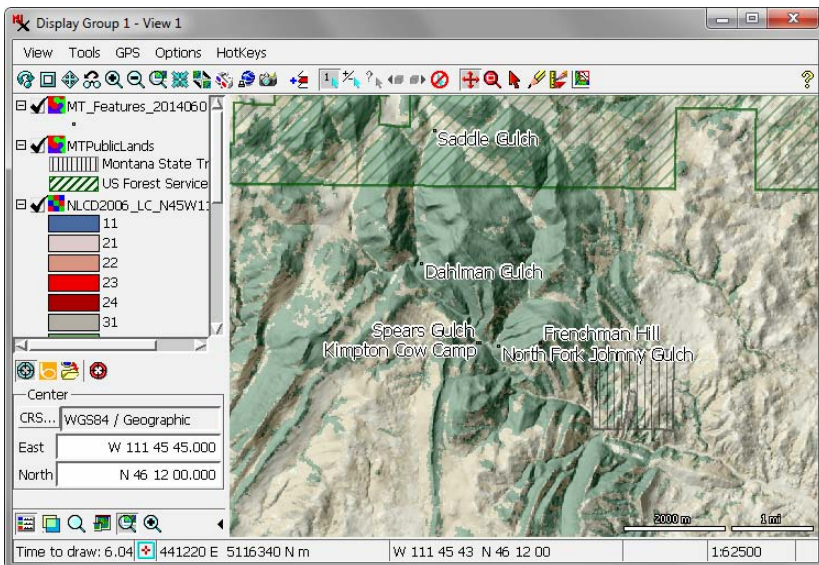
NOTE: you can quickly recenter the View at any location already within its extents by placing the mouse cursor at the desired location and pressing the keyboard space bar.

### Microsoft Bing Maps Location Service

The Microsoft Bing Maps Service option is available in the professional TNTgis software products and requires an Internet connection. This mode allows you to enter an address, a place name, or the name of a geographic feature as the new location for the View center. Your entry is submitted to the Bing Maps Service and a list of features matching the query is returned and listed for your selection.

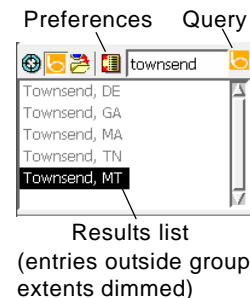


Places panel in Change View Position mode. Map coordinates for the desired View center have been entered in the East and North fields using WGS84 / Geographic coordinates (the group CRS is different, as shown by the ToolTip on the Position Report shown above). After entering the new coordinates, pressing the Center icon button redraws the View with the new center position (below).



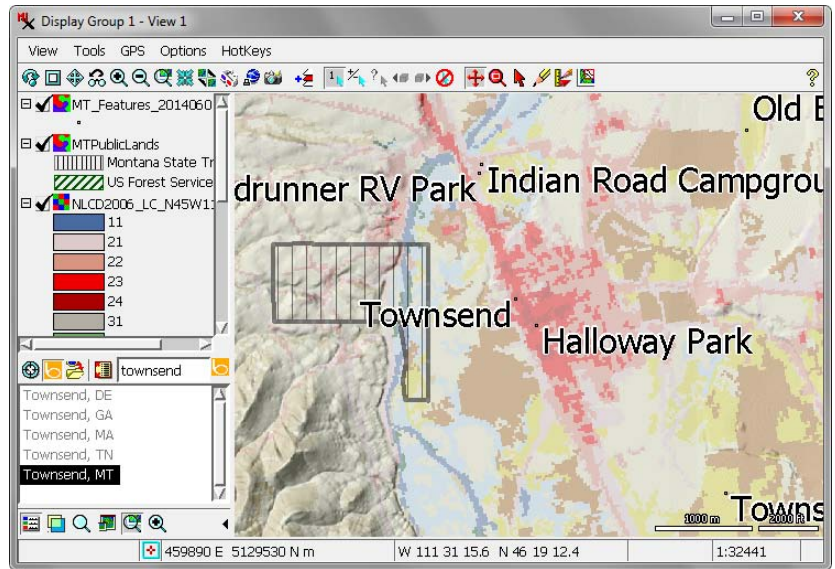
NOTE: MicroImages pays a license fee for each TNTgis product that uses the Bing Maps Location Service and Bing Maps base map and image layers. This license requires that you agree to Microsoft's terms for the use of these services. The first time you use the Bing Maps Service feature you are presented with, and required to agree to, Microsoft's end-user terms of use agreement in order to access this service.

**Location Query** When you select the Bing Maps Service option, a text field and Query icon button are shown at the top of the Places panel (see illustration to the right). Enter the name of the desired place or feature in the text field and press the Query icon button (or press <Enter>) to submit the location request.

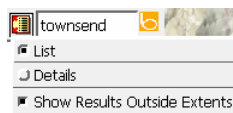
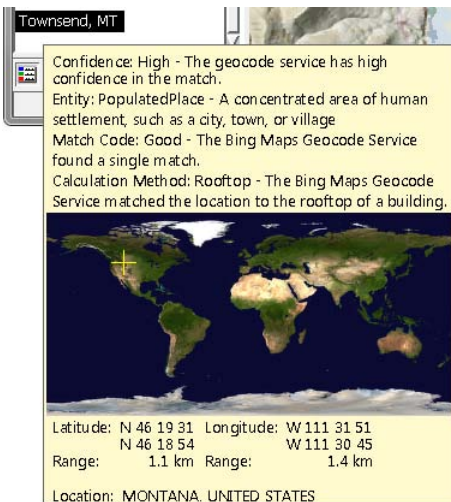


(continued)

**Results List** The results returned from the Bing Maps Service are shown in the list in the lower portion of the Places panel. Results that are outside the extents of the current display group are shown in gray (dimmed). If you hold the mouse cursor over a list entry, a DataTip appears with additional information about the result, including the confidence level and match code, type of entity, the geographic coordinates of the result, and a global map graphic showing its location (see illustration below). Left-click on the desired entry in the results list to recenter the View on the new location (this may also cause a change in the View scale).



View recentered by submitting a place name to the Bing Maps Service in the Places sidebar controls.



Preferences options for the Bing Maps Service.

Name	Confidence	Entity	Match Code	Calculation Method
Townsend, MA	High	PopulatedPlace	Good	Rooftop
Townsend, TN	High	PopulatedPlace	Good	Rooftop
Townsend, MT	High	PopulatedPlace	Good	Rooftop

Location results in Details form.

The number of results shown in the result list is determined by how carefully you define the location in your text. If you enter a city name, you are likely to get multiple results. If you enter a city and state name, you will likely get a unique result. A street address may seem very specific but produce multiple results if details such as North or South or Street or Circle are not included.

**Preferences** The Preferences icon button opens a menu with options that control the presentation of the location results.

The top two menu entries (illustrated above left) toggle the results between List form (showing only the location names) and Details form (which includes additional columns of information). The Details columns include some of the information shown in the DataTip for a result: confidence level, entity type, and match code. In order to see all of the columns in Details mode you will likely need to scroll the results horizontally or make the sidebar wider.

If you want to confine results to the extents of the current group, turn off the Show Results Outside Extents toggle option on the preferences menu. Otherwise all results matching your query are listed, with those outside the group extents shown in gray (dimmed).

