

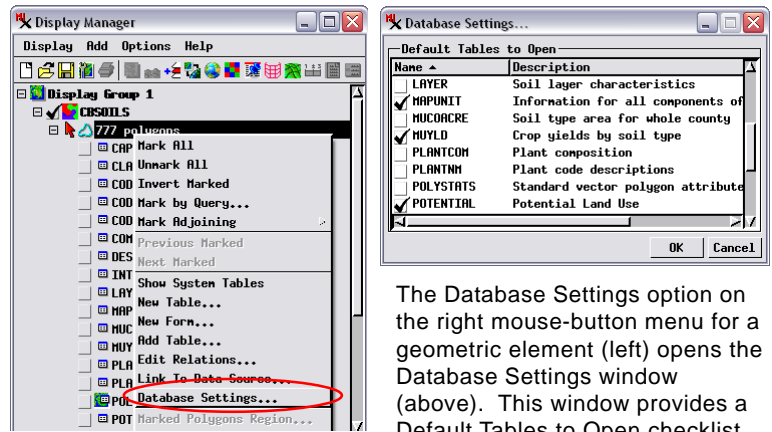
# Set Default Tables and Hide Tables

Vector, shape, and CAD objects can include a wealth of attribute information stored in multiple database tables attached or related to the geometric elements. Some of these attribute tables may contain information that is more important to the users of the data than other tables. As you design the visual presentation of a geometric object (element display styles and DataTips), you can designate one or more default tables per element type that will automatically open when an associated element is marked in the View. You can also choose to hide particular tables, excluding them from table lists in the Display Manager.

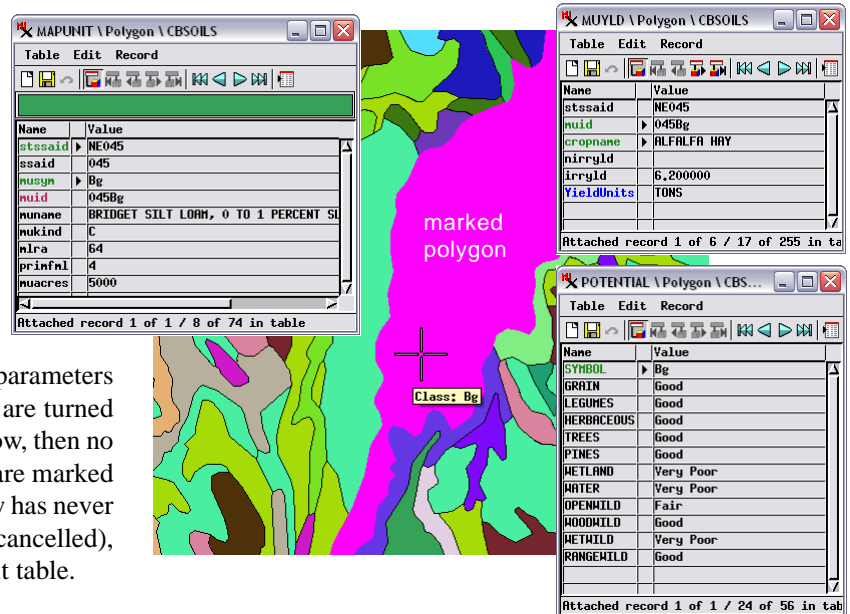
## Setting Default Tables

Default tables open automatically (if they have not already been opened manually) when an attached or related geometric element is marked in the view. In vector objects, which can have multiple element types, you can designate default tables for each element type.

To set default tables, display the geometric object and use the tree control in the Display Manager to expand the object's entry in the layer list to show its component element types (see illustration above right). Right-click on the desired element type and from the resulting menu choose the Database Settings option. The Database Settings window provides a *Default Tables to Open* checklist showing all of the available tables. You can turn on the checkbox for one or more tables to set them as default tables (or leave all tables unchecked), then press OK. The default table setting is immediately active in the current Display session and is automatically stored with the object's other display parameters for future sessions. If all checkboxes in the checklist are turned off when you press OK on the Database Settings window, then no table opens automatically when elements of that type are marked in the View. However, if the Database Settings window has never been opened for the object in question (or opened and cancelled), then the first table in the table list is used as the default table.

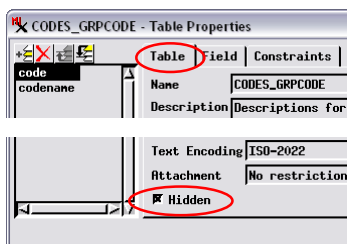


The Database Settings option on the right mouse-button menu for a geometric element (left) opens the Database Settings window (above). This window provides a Default Tables to Open checklist for that element type. You can turn on the checkbox for one or more tables to have them automatically open when an attached element is marked in the view, or leave all tables unchecked to have no table automatically opened. In the illustration above, three polygon tables for a soil map vector layer have been set as default tables; the automatically-opened table views are shown below.

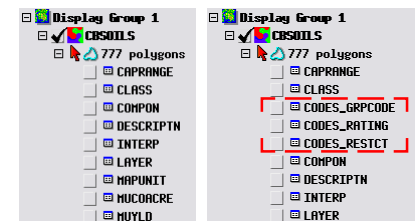


## Hiding Tables

You can set any database table to be hidden by opening the Table Properties window for the table and turning on the *Hidden* toggle button on the *Table* tabbed panel (see illustration above).



You can hide any table in the Display Manager list by opening the table's Table Properties window and turning on the *Hidden* toggle on the *Table* tabbed panel (left). In the table list to the right, three tables have been hidden (outlined in red in the far-right illustration).



Hidden tables do not appear in the list of tables in the Display Manager or in prompts to select a table and field (such as when you are constructing a query for marking elements in the View). Hidden tables do appear in the Database Editor view, however. When you display a geometric object that has hidden tables, the right mouse-button menu for the relevant element type includes a *Show Hidden Tables* toggle option that allows the user to temporarily override the *Hidden* setting.



If a geometric element has hidden tables, the right mouse-button menu for the element includes a *Show Hidden Tables* option to temporarily override the *Hidden* setting.