

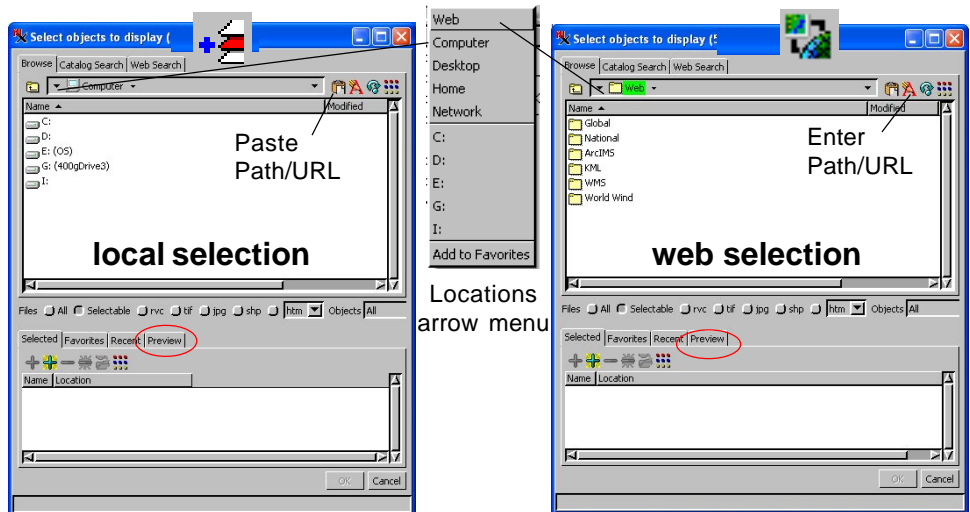
Using Internet-based Maps and Images

(My Maps, custom Google and Bing Maps, and Google Earth structured tilesets, KML, WMS, and ArcIMS layers)

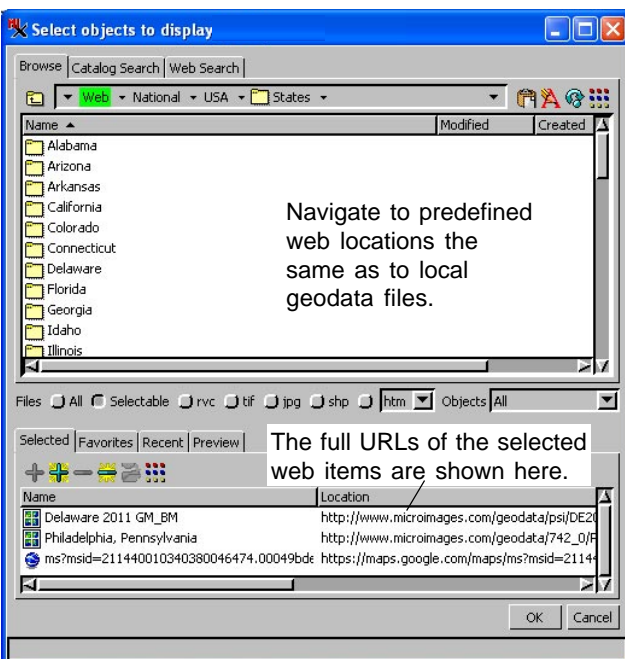
Selection of Internet-based map and image layers is integrated with local geodata selection and can be accessed by the Add Objects or Add Web Layers icon or from the Add/Layer menu cascade in the Display or Layer Manager. The Add Web Layers icon defaults to web layer selection while the Add Objects icon defaults to your local file structure. Side-by-side comparison of the two default selection windows (shown below) indicates their nearly identical appearance and parallel operation. Note that a Preview tabbed panel is included at the bottom of the window for both web and local selections (circled below). For additional information on previewing selected objects before adding them to your view, see the Technical Guide entitled *System: Preview Map and Image Selections*.

The types of Internet-based maps and images supported include:

- KML;
- Google Maps' My Maps;
- Google Fusion Tables;
- tilesets hosted on MicroImages' web site in Google Earth, Google Maps, Bing Maps, and NASA's World Wind formats;
- tilesets hosted on other public web sites;
- ArcIMS; and
- WMS.



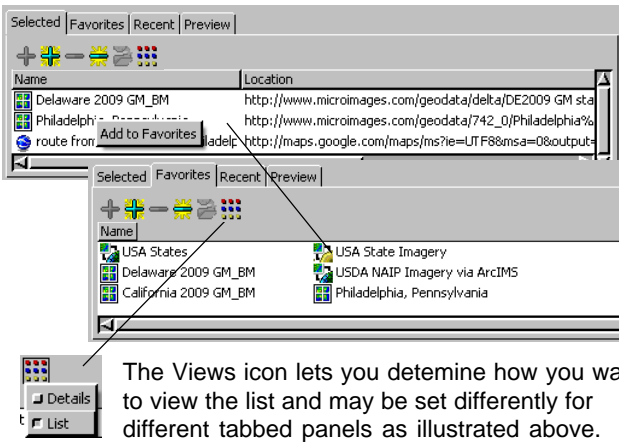
You can select multiple map and image layers in any combination from the web sources listed above and mix them with your local geodata objects for display or use in other TNT applications. You can navigate to MicroImages' predefined web locations just as though you were navigating the directories on your local computer. You can also paste or enter the URL for any of the supported web layer types to select web locations for geodata not provided by MicroImages. To select other web locations, click on the Paste Path/URL or Enter Path/URL icon and paste or enter the URL in the field to the left.



The location of web layers you select or locate can be added to your Favorites list and is remembered in the Recent list along with any locally selected objects. Right-click on a selected item and choose Add to Favorites to get it on the list on the Favorites tabbed panel. Each type of web layer has different features (for example, some layers require user name and password, such as Fusion Tables), so these features and their optional controls are discussed in separate Technical Guides.

The Browse tabbed panel at the top of the Select Objects window is used for web, local, and intranet layers. The Catalog Search tabbed panel is for use with geocatalogs you have previously generated from your local and intranet geodata. The Web Search tabbed panel is for use in locating WMS and ArcIMS web layers. All four of the tabbed panels in the lower part of the window are for use with any selected item regardless of type or local or web location.

The Browse tabbed panel at the top of the Select Objects window is used for web, local, and intranet layers. The Catalog Search tabbed panel is for use with geocatalogs you have previously generated from your local and intranet geodata. The Web Search tabbed panel is for use in locating WMS and ArcIMS web layers. All four of the tabbed panels in the lower part of the window are for use with any selected item regardless of type or local or web location.

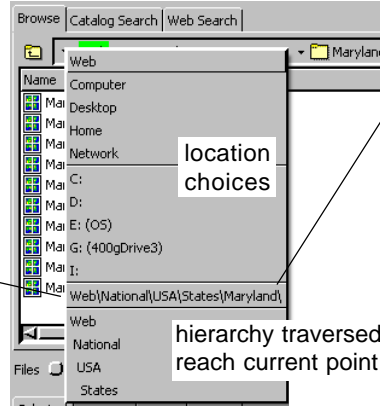


The Views icon lets you determine how you want to view the list and may be set differently for different tabbed panels as illustrated above.

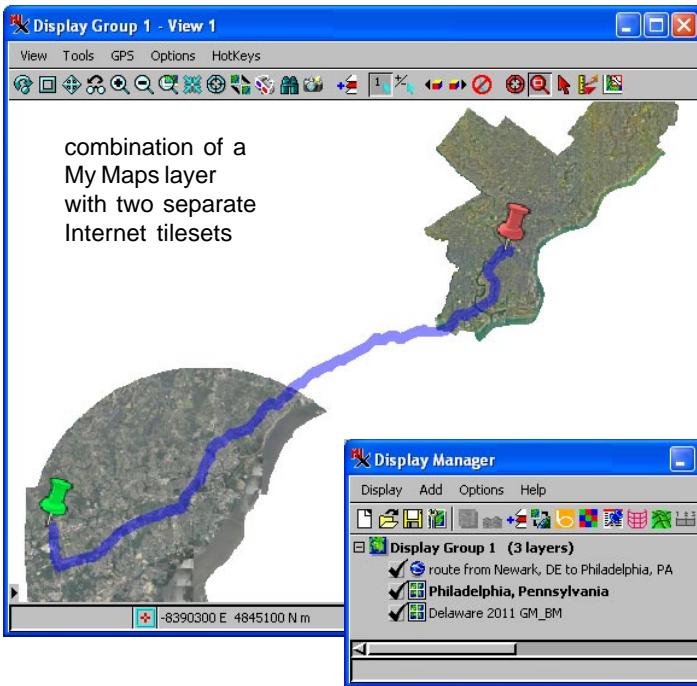
There are three ways to add an item to your Favorites list.

- Highlight a location in the top list in the Select Objects window, right-click and choose Add to Favorites.
- Right-click on any of your selected items and choose Add to Favorites.
- Highlight a location in your Selected list and click on the Add to Favorites icon.

The open panel automatically switches from Selected to Favorites when you add to your favorites and you can see the item you chose at the end of your Favorites list.



If you choose Add to Favorites from the Locations arrow menu (to the right of the up-one-level icon), the path to your current level for selection becomes a favorite location that appears in this menu.



Both the 4-inch-resolution Philadelphia tileset and the 1-meter-resolution Delaware 2009 tileset are hosted as sample tilesets by MicroImages. The My Maps route began as directions in Google Maps and was saved as a My Maps layer with end points that are altered from the default.

