

Adding Custom Web Layers to Geomashups

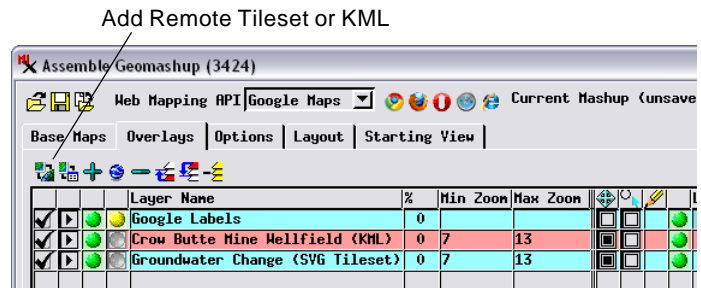
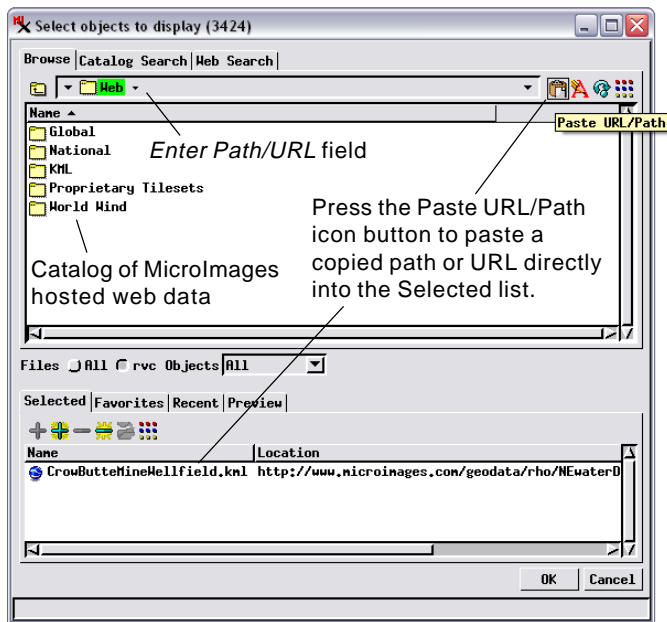
The Assemble Geomashup process allows you mash up tilesets and KML files that have already been posted on the World Wide Web. You can use the *Add Remote Tileset or KML* icon button (see the illustration to the right) to open a selection dialog for this purpose. The Browser tabbed panel at the top of this dialog shows a directory listing of tilesets and KML files that are hosted by MicroImages. The Enter Path/URL field initially shows the path to the last MicroImages web layer you selected or the root folder labeled “Web” if this is your first selection. To select one of the MicroImages tilesets or KML files, simply browse through the directories in the selection dialog and choose the desired item from the list. You can move back up through the current directory path by clicking on any of the path components in the Enter Path/URL field or use the Up One Level icon button to its left.

To add your own custom web layer to the geomashup, you need to specify the full web URL for the tileset TSD file or the KML file. You can either manually enter the URL in the Enter Path/URL field or copy and paste the URL into the Select Objects dialog. You can also add the URL for any of your custom web layers to your Favorites list for easy selection in any TNTmips process (see discussion on the next page).

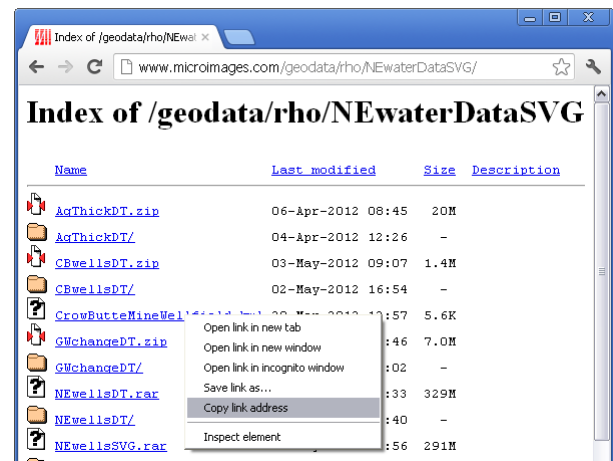
Copying and Pasting a URL

Although you can manually type the URL into the Enter Path/URL field (see below), there is less chance of error if you paste it in. You can use your web browser to copy the file URL to the clipboard, as described in the illustration to the right.

To paste the URL into the Select objects dialog, press the Paste URL/Path icon button to the right of the Enter Path/URL field (see illustration below). The path you have copied to the clipboard is pasted directly into the list in the Selected tabbed panel in the lower part of the selection dialog. Simply press the OK button to accept it and close the dialog. (If the text string in the clipboard is not a valid path or URL, an error message is shown in the status field at the bottom of the Select Objects dialog.)



Use the Add Remote Tileset or KML icon button to open a selection dialog to specify the URL (web address) for the tileset or KML data on the web that you wish to use as an overlay in the geomashup.

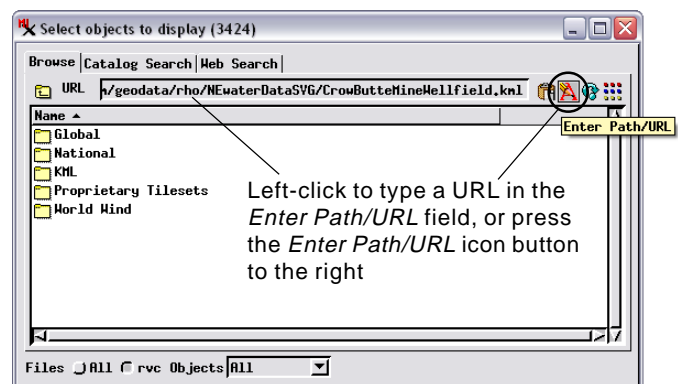


You can use most web browsers to copy to the clipboard the URL of the tileset TSD file or KML file you want to add to the mashup. Navigate to the directory containing the desired file, right-click on the file listing and choose “Copy link [...]” option from the pop-up menu. The exact wording of this menu option varies with the browser. For example, it is “Copy link address” in Google Chrome and “Copy link location” in Firefox.

Manually Entering a URL

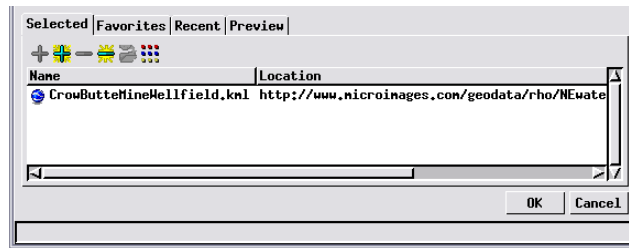
You can manually type a URL into the Enter Path/URL field. To do so, either

- toggle on the Enter Path/URL icon button to the right of the field
- simply left-click in the Enter Path/URL field.



(over)

When the desired URL has been entered into the Enter Path/URL field in the Select Objects window, press the Enter or Return key on your keyboard to accept the URL. It will then be shown in the Selected tabbed panel at the bottom of the window, as shown in the illustration to the right. You can then press the window's OK button to complete the selection procedure.



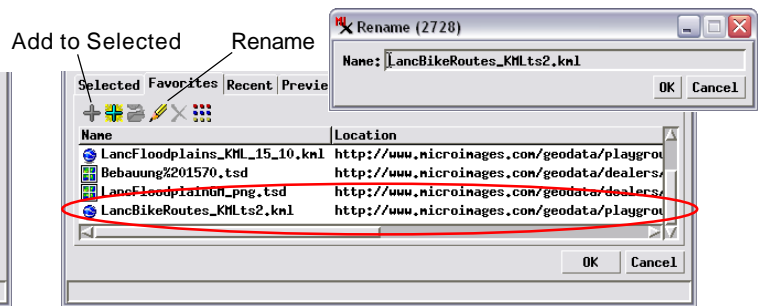
Pressing the Enter or Return key on your keyboard moves the URL to the Selected list, ready to be accepted by pressing OK.

Adding a Custom URL to Your Favorites List

You can add the URL for any of your custom web layers to your Favorites list during the selection procedures described on the previous page. Once the custom URL is shown in the Selected list in the Select Objects dialog, you can left-click on its list entry to highlight it as illustrated below and press the Add to Favorites icon button (or right-click on the list entry and choose Add to Favorites from the popup menu). The Favorites tabbed panel is then automatically exposed and now contains your custom URL. Any custom web layer that you add to your favorites list can then be selected for the Assemble Geomashup process (or other suitable TNTmips process) from the Favorites tabbed panel in the Select Objects

dialog. Simply highlight the list entry of the desired custom URL and press the Add to Selected icon button, which adds this URL to the dialog's Selected list. You can then press OK on the selection dialog to finalize the selection.

The Favorites list entry for a custom URL includes a Name field that by default shows the file name of the TSD or KML file being selected. You can edit this list name if you desire. Simply left-click on the item in the Favorites list to highlight it and press the Rename icon button above the list. A Rename dialog opens to allow you to edit the list name.



During the selection procedure you can also add a custom URL to your Favorites list for easy subsequent selection. With the custom URL added to the Selected list in the Select Objects dialog, left-click on its list entry and press the Add to Favorites icon button (or right-click on the list entry and choose Add to Favorites from the popup menu). The Favorites tabbed panel is automatically exposed showing the Favorites list, which now includes your custom URL. You can add any item in the Favorites list to the Selected list on the Selected tabbed panel by left-clicking on the Favorites item and pressing the Add to Selected icon button. You can change the default name of an item in the Favorites list by left-clicking on the item and pressing the Rename icon button, which opens a Rename dialog for editing the list name.

