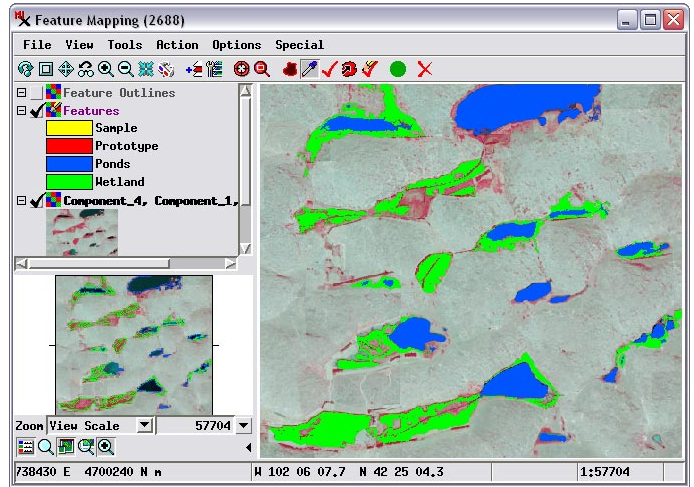


Save Features as Vector and KML

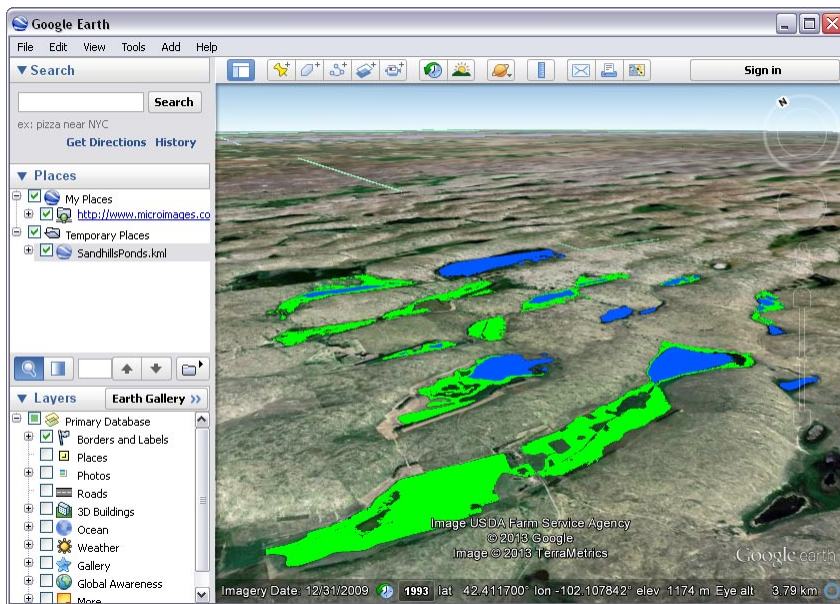
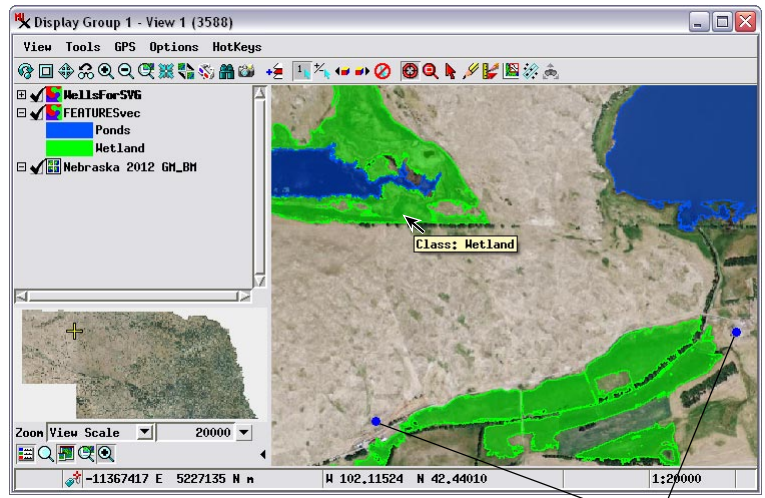
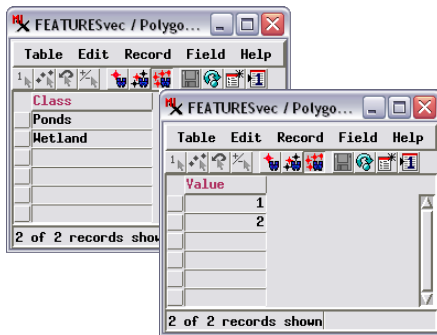
The main product of your interactive image classification activities in TNTmips (Image / Interpret / Feature Map) is a Features raster object that shows areas assigned to each of the named feature classes in a unique color. However, you also have the option to save features in two other forms: as a vector object in a TNTmips Project File, and as a KML file.

When you save features as a vector object (File / Features / Save as Vector), the boundary of each contiguous feature area is converted to a polygon in the designated output vector object. Feature names and associated cell values are saved to polygon attribute tables and are attached to all associated polygons and thus can be set to appear in polygon DataTips in views. The color information you have set up for the feature classes is also automatically transferred to the vector object as polygon fill and border styles. The resulting vector object then can be displayed in TNTmips with any relevant images, tilesets, or geometric objects (vector, shape, or CAD), or it can be used as the basis for further analysis or processing.

You can save features as a KML file (File / Features / Save as KML) for interactive 3D perspective viewing in Google Earth. The boundaries of each feature class are written to the KML file as a multigeometry element with all component polygons as children of this element. The feature class colors are transferred to the KML file as polygon fill and border colors.



Feature Mapping window showing pond (blue) and wetland (green) feature classes mapped in a small area of the Sandhills region of Nebraska, USA, using a 4-band orthoimage. A color-infrared reference image using three of the image bands is shown.



Above, saved Features vector object displayed over the 2012 Nebraska natural color orthoimage web tileset hosted at MicroImages.com. Also shown is a vector object with groundwater well locations (blue dots). The polygon styles in the Features vector have been edited to make the fill colors partially transparent, allowing the underlying image details to be seen in these areas. Polygon tables with the feature class names and associated feature class raster cell values (above left) are automatically saved with the Features vector object, so that the feature class name or the value can be set to be shown in the polygon DataTip.

Left, Google Earth window showing KML file with pond and wetland features saved from the Feature Mapping process in TNTmips. Each feature class is written to the KML file as a multigeometry element (with all component polygons as children of this element) with the associated color assigned as the KML polygon fill and border colors.