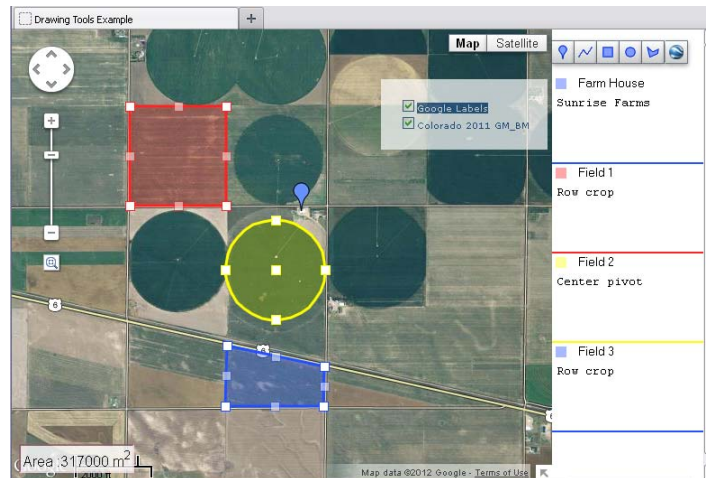


# Geomashup Drawing Tools Sidebar

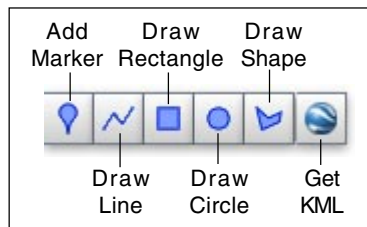
You can create Google Maps geomashups with a sidebar equipped with drawing and measuring tools that anyone can use to make measurements and to make and save annotations while viewing the geomashup in their browser. Users can add point markers and draw lines, rectangles, circles, or polygonal shapes. Any number of elements can be added, and each element can be provided with a custom name and description. Users can also obtain KML text for the entire collection of drawing elements at any time.

In the Assemble Geomashup process, use the Template menu on the Layout tabbed panel for Google Maps to choose the Drawing Tools Sidebar. (See the Technical Guide entitled *Geomedia Publishing: Geomashup Layout Templates* for other sidebar options.) The width and position (left or right) of the sidebar can also be specified.

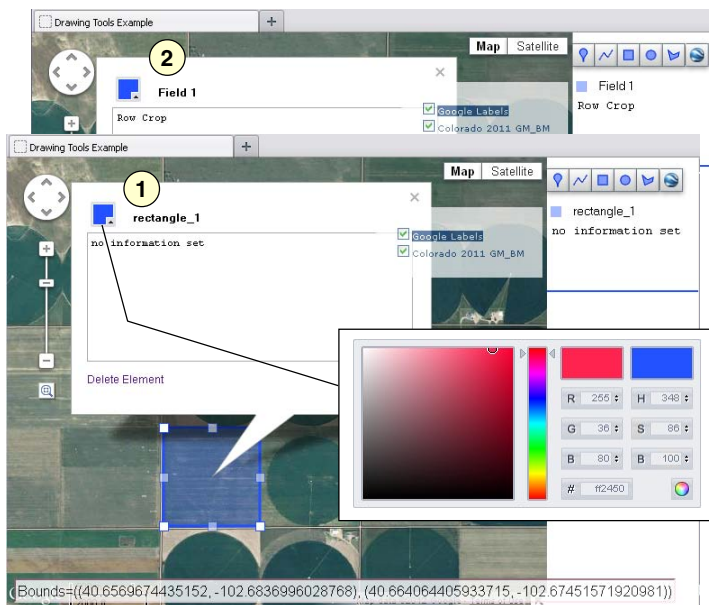
When the geomashup is viewed in a web browser, the drawing toolbar appears at the top of the sidebar. When you draw an element, its associated measurement (position coordinates for a marker, distance for a line, radius for a circle, ...) is shown in a box at the bottom of the map view. In addition, an information window automatically opens in the map view with placeholder text for a name and description. You can edit this text directly in the information window. Clicking on the color sample in the info window opens a color picker to allow you to change the color used for the element's boundary line and fill. The names and descriptions of all



Geomashup with drawing tools sidebar, which has been used to create a point marker, rectangle, circle, and polygonal shape. The name and description for each element, entered when the elements were created, are listed in the sidebar.



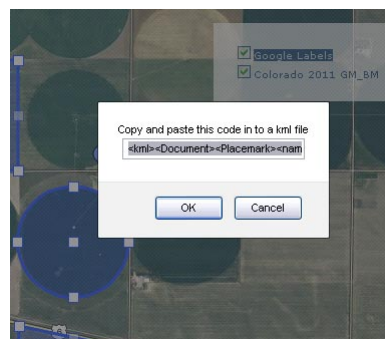
Use the Template menu on the Layout tabbed panel to choose the Drawing Tool Sidebar for a Google Maps geomashup. You can also set the sidebar position (left or right) and width in pixels.



When you draw an element, an information window automatically opens with a default name for the element as shown in illustration 1 above. You can select and edit the text in this window to provide your own name and description for the element, as shown in illustration 2. Clicking on the color sample opens a color picker control (inset) that lets you set the color to be used for the shape outline and fill. You can reopen an element's information window and make changes at any time by clicking on the element.

added elements are automatically listed in the sidebar, which automatically scrolls vertically if needed. You can click on an element (or on its listing in the sidebar) at any time to reopen the information window and modify the information text or color. The information window also includes the option to delete the element.

Press the Get KML button at any time to obtain KML text for the current collection of drawing elements. This text is presented in a text field in a popup dialog. Due to security measures enforced by browsers, this dialog is prohibited from saving a KML file directly. You can copy this text to the clipboard, paste it into a new document in a text editor, and save the result as a KML file (\*.kml) that can be viewed in Google Earth.



Pressing the Get KML button opens a dialog with a text field containing KML text for all of the drawing elements. Copy this text to the clipboard, use a text editor to paste it into a blank document, and save as a KML file that can be viewed in Google Earth.