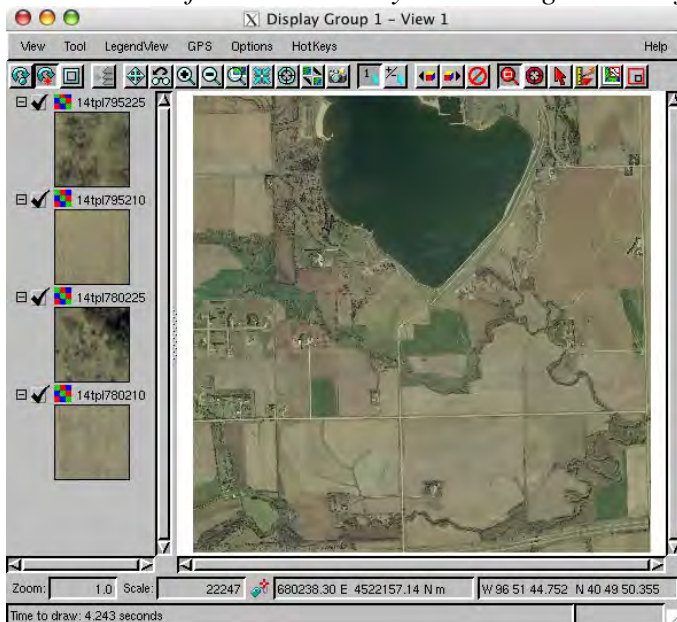
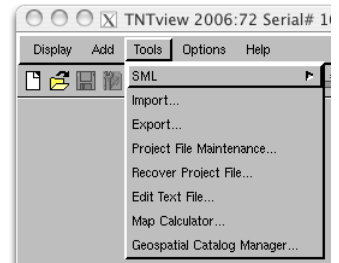


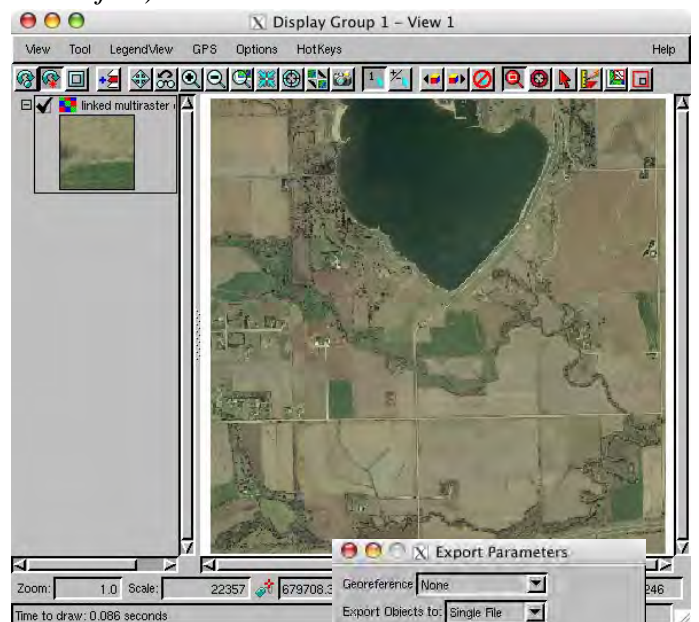
## Link, Import, and Export

You can use TNTview and other professional TNT products to link to, import from, and export to a wide variety of file formats. Additionally, a large number of formats are supported for direct display and use (see the Quick Guide entitled *Direct Use of Popular Geodata Formats*), which makes the link or import step to use external files in TNTview unnecessary or a matter of preference. Direct use automatically creates a link file with the same name and in the same folder as the selected external file but with an RLK extension. When you link using the Import process, you choose the Project File where the link object is located. In both cases, the link file/object is used to store additional information created to enhance the use of the external files, such as raster pyramids, styles, and additional database tables. Import and Export are on the Tools menu in the TNTview window. TNTlite also has the ability to link, import, AND export within the size constraints of TNTlite.

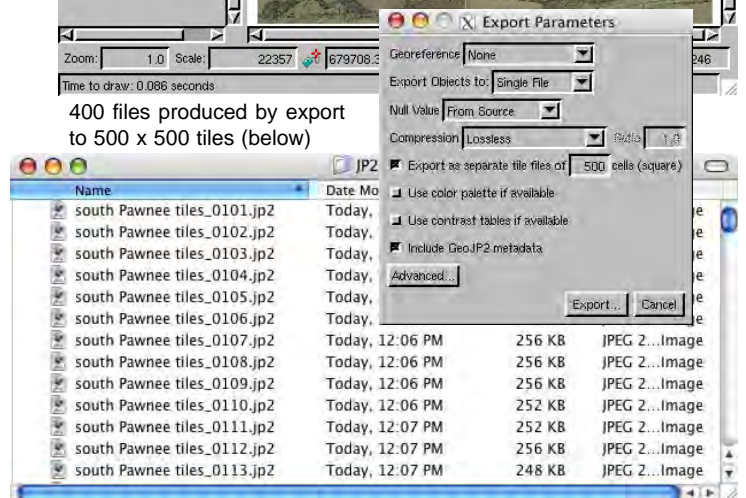
Your choice of whether to directly use, link to, or import files depends on a number of factors. If you want the files available for use and modification in TNTview and other vendor's products without divergence, choose direct use or linking if available for the format. If you have raster tiles that you want to use collectively as a multifile raster object, choose linking in the Import process or import to Project File format (see the color plates entitled *Import: Linking to Create a Multifile Raster* and *System: Using the Multifile Raster Object*).



The illustrations above show direct use of four 5000 x 5000 cell MrSID files (left) and after linking with a single tiled raster (multifile raster object) for all files (right). Although just four files are used for illustration, TNTview can use any number of these external raster tile files for either of these methods. The multifile raster object was selected for export to JP2 files with the Export as separate tile files option on with 500 as the number of square cells to make 100 TNTlite-sized JP2 tiles from each of the four MrSID input objects. When you use this export option, a file for direct use in the TNT products is created with each tile that provides the georeference information. If the Georeference option in the Export Parameters window is set to None, the JP2 file is georeferenced for use in the TNT products only. If you select another georeference option, you get the type of georeference selected for each tile. Thus, with ARC/INFO World georeference selected, you would get 1200 files (400 \*.jp2, 400 \*.prj, and 400 \*.j2w).



400 files produced by export to 500 x 500 tiles (below)



Name	Date Modified	Size	Type
south Pawnee tiles_0101.jp2	Today, 12:06 PM	256 KB	JPEG 2...Image
south Pawnee tiles_0102.jp2	Today, 12:06 PM	256 KB	JPEG 2...Image
south Pawnee tiles_0103.jp2	Today, 12:06 PM	256 KB	JPEG 2...Image
south Pawnee tiles_0104.jp2	Today, 12:06 PM	252 KB	JPEG 2...Image
south Pawnee tiles_0105.jp2	Today, 12:07 PM	252 KB	JPEG 2...Image
south Pawnee tiles_0106.jp2	Today, 12:06 PM	256 KB	JPEG 2...Image
south Pawnee tiles_0107.jp2	Today, 12:06 PM	256 KB	JPEG 2...Image
south Pawnee tiles_0108.jp2	Today, 12:06 PM	256 KB	JPEG 2...Image
south Pawnee tiles_0109.jp2	Today, 12:06 PM	252 KB	JPEG 2...Image
south Pawnee tiles_0110.jp2	Today, 12:06 PM	252 KB	JPEG 2...Image
south Pawnee tiles_0111.jp2	Today, 12:07 PM	256 KB	JPEG 2...Image
south Pawnee tiles_0112.jp2	Today, 12:07 PM	248 KB	JPEG 2...Image
south Pawnee tiles_0113.jp2	Today, 12:07 PM	248 KB	JPEG 2...Image