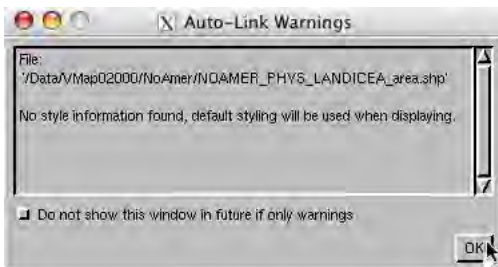


System

Resolving Auto-Link Issues

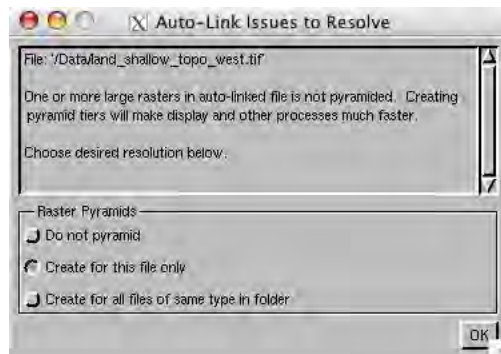
When selecting a file supported for direct use in the TNT products, such as shapefiles (*.shp) or JPEG2000 (*.jp2), a notification window may open to let you know that some expected component of the data was not found, such as style or georeference information. Notice of missing components appears in an *Auto-Link Warnings* or an *Auto-Link Issues to Resolve* window. You may also get the Dense Layer Verification window if you have chosen a layer with a great many elements. This latter window also appears under the same circumstances for geometric objects in TNTmips' Project File format and is discussed in the color plate entitled *Managing Display of Large Vectors*. For a list of file types supported for direct use, see the back of the color plate entitled *AutoOpen External Files in TNTmips*.



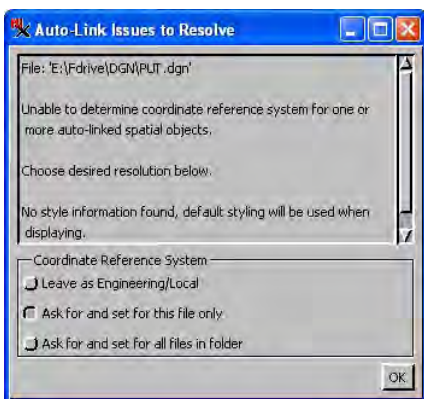
The *Auto-Link Warnings* window is the simplest because it only serves to notify you if an expected component has not been found with no further resolution provided by the TNT products. This window is used for missing optional information, such as style information. You can create new styles for the object in any process where it is displayed. It is also possible that you may have the accompanying style information but it is named incorrectly. If you think you have style information for a shapefile, check the folder with the shapefile and companion files for a *.avl file that is named

differently than the other companion files. If there is one you think goes with the shapefile, name it the same as the other companion files, delete the link file (*.rlk), and choose to display the shapefile again. Remember that the link file contains all additional features not supported in the original format, such as additional database tables, vector optimization, and raster pyramids, so you only want to delete it to gain access to styles if you have not made significant changes that will be in the link file.

Pyramiding large rasters is important for display at full view and other zoom levels whenever viewing at less than full resolution. The raster file types that can be directly displayed that use wavelet compression, which are JPEG2000, MrSID, and ECW, already have pyramids defined. Other raster file types will not. If you select an external raster file greater than 1000 cells in either dimension that is not pyramided, you will get an *Auto-Link Issues to Resolve* window with three options for how to proceed. The small amount of time taken to pyramid a large raster is well worth it in subsequent display time improvements. These pyramids, as well as other display modifications you may make, are stored in a same-named link file (*.rlk). If you



have a high resolution display and the selected raster's size is not much more than 1000 pixels in either direction (which means the entire raster will fit in a View window at full resolution), you might choose not to create pyramids; otherwise, it is highly recommended. Whether you choose the option to create pyramids for files one by one as you view them or for all files of the same type within a folder is up to you and depends on whether you plan to use most or all of them in the TNT products and how many there are.



If the Coordinate Reference System information for a file appears incomplete (for example, the coordinate system has no datum specified), you are given the opportunity to provide this information as part of the auto-link file. If you do not have this information or the file uses a local engineering coordinate system, choose Leave as Engineering/Local. If you think it should have a Coordinate Reference System and the details are not immediately at hand but you want to view the file now, you can later specify the correct Coordinate Reference System using Support/Maintenance/Change Coordinate Reference System. If the information is readily available, choose the default option if you want the information you supply to apply to the selected file only or choose the *Ask and set for all files in folder* option if the information you will provide in the Coordinate Reference System window applies to all the files of the same type in the folder.