

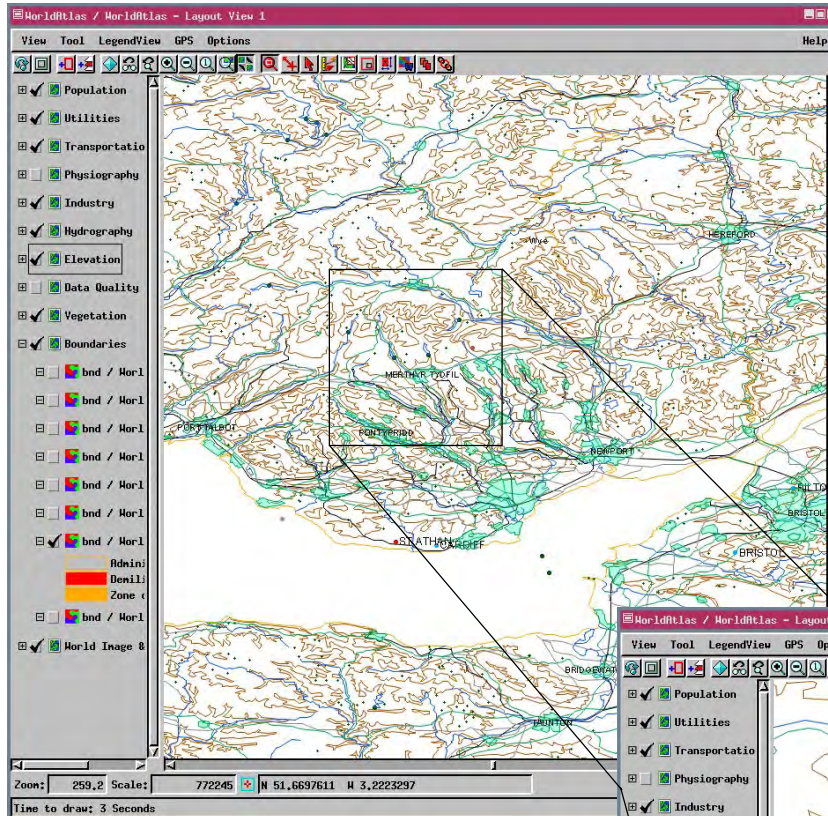
Global Data Set with Scale Controlled Labels

Map scale control is the ability to turn groups, layers, and/or elements on and off for display as you zoom in and out. The TNT products provide two types of labels: label elements that are set up in the Spatial Data Editor and can be positioned interactively in the Editor and on-the-fly labels that can be set up in the Spatial Data Display process using various positioning parameters you designate. Previously, map scale control could be applied to labels only if the

vector object contained label elements—it was not available for the on-the-fly labels. Map scale control is now available for both types of labels.

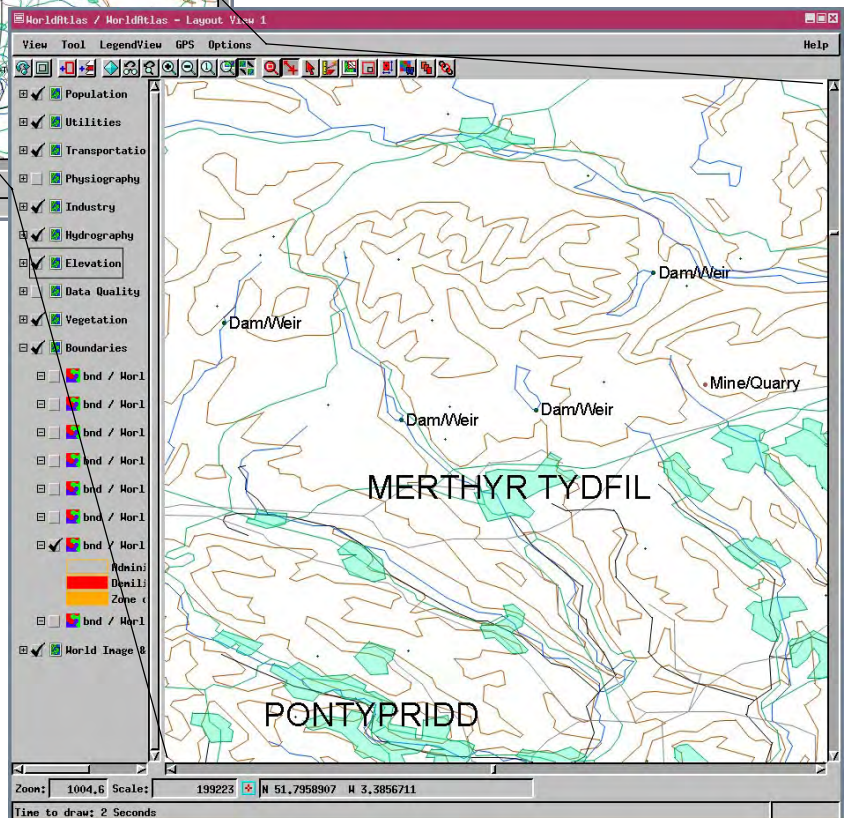
The level of detail available in the Global Data Sets is illustrated by the screen captures on this page.

The 55 vector objects assembled in the layout provided with the Global Data Sets available from MicroImages to current TNTmips subscribers (see the color plate entitled *Global Data Sets*) came from VMap0, which does not support labels for points, lines, or polygons where only one element type per theme is provided.



The TNT products support points, lines, and polygons in a single object with labels for any or all of them. On-the-fly labeling was used to provide labels for objects for which labels were desired. Although not all objects are labeled, all have DataTips set up so you can view attributes for any element without an overwhelming amount of text on the screen.

The goal with map scale controlled labels is to not have the labels appear until they are legible or nearly legible. When labels appear before they are fully legible, it lets the viewer know that the information is there if they care to zoom in. You can often recognize the text of labels that are only marginally legible. When labels appear that are not legible at all, they generally cause screen clutter, which masks other features and outweighs the benefits of knowing that labels are present.



The two View windows show the on-the-fly labels that are visible at different map scales. There are no labels drawn at full view in the World Atlas layout. The upper window shows labels that appear when you zoom in far enough for the MODIS mosaic image to no longer draw. The lower View shows additional labels that appear when you zoom in again.