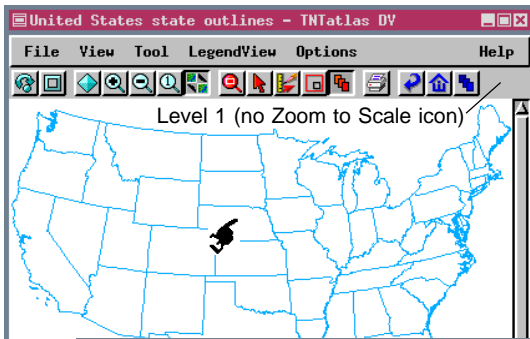
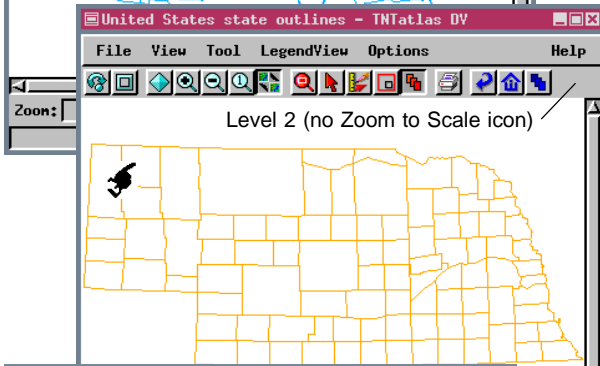


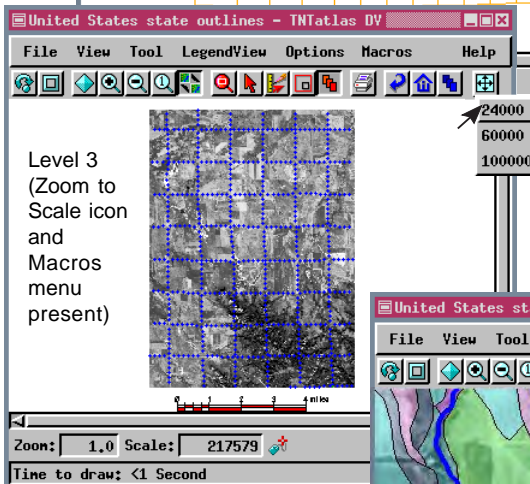
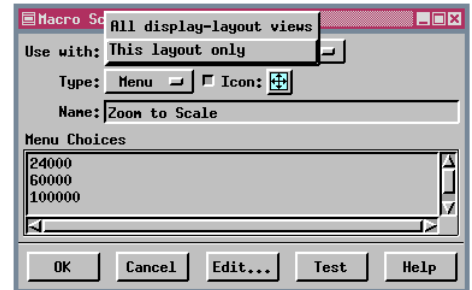
Use Layouts to Customize TNTAtlas/X



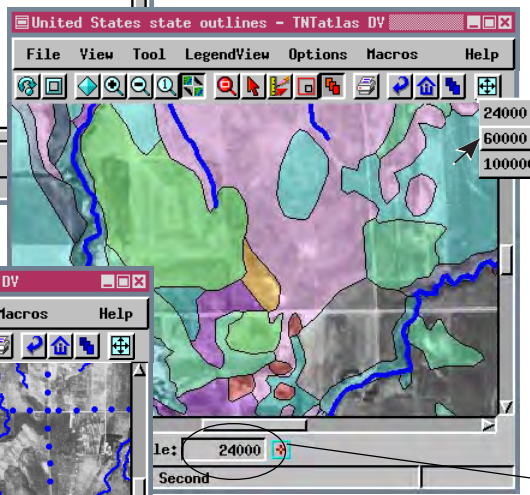
Many Tool Scripts and Macro Scripts are data dependent. Other scripts may be useful with a variety of layouts, but only if the data is at approximately the same map scale. The Macro Script used as an example here gives reasonable displays with the Crow Butte data shown but the scale choices are inappropriate for the United States and Nebraska levels of the atlas used to navigate to this layout—viewing the United States or Nebraska outline map at any of these map scales gives you nothing but background color with the occasional line.



These layout- or group-specific Macro and Tool Scripts can be created by the atlas designer in TNTmips or by the TNTAtlas user if customization is allowed. To create a layout-specific Macro or Tool Script, simply choose *This layout only* on the *Use with* option button when you are adding the Macro or Tool Script. There is a corresponding *This group only* choice when you are adding a script to a group rather than a layout. You then need to save the layout or group to which the script was added. The script is added for your use in the current display session and will also appear each subsequent time the group or layout is opened in any of the TNT products or when navigated to using TNTAtlas or the HyperIndex Navigator in any of the TNT products.



The other option on the Use with button depends on the kind of group or layout open. All scripts added are saved separately for 2D groups, 3D groups, display layouts, and hardcopy layouts. Specifics about Macro Scripts and Tool Scripts and generalized customization are discussed on other color plates.



The other option on the Use with button depends on the kind of group or layout open.

All scripts added are saved separately for 2D groups, 3D groups, display layouts, and hardcopy layouts. Specifics about Macro Scripts and Tool Scripts and generalized customization are discussed on other color plates.

Note that the map scale of the View matches that selected from the Macro Script menu in the previous View.



The presence of an icon on the toolbar is optional. Whether or not the icon is shown, Macro Scripts are added to the Macros menu, which is only present if there are associated Macro Scripts, and Tool Scripts are added to the Tools menu. In the illustrations at the left note that the Macro Script icon is absent for Levels 1 and 2 of this atlas, but it appears on Level 3, which is a layout that has had a layout specific script saved with it, along with the Macros menu. Also note the presence of map scale controlled layer visibility as the Macro Script is used to change the map scale of the display.