

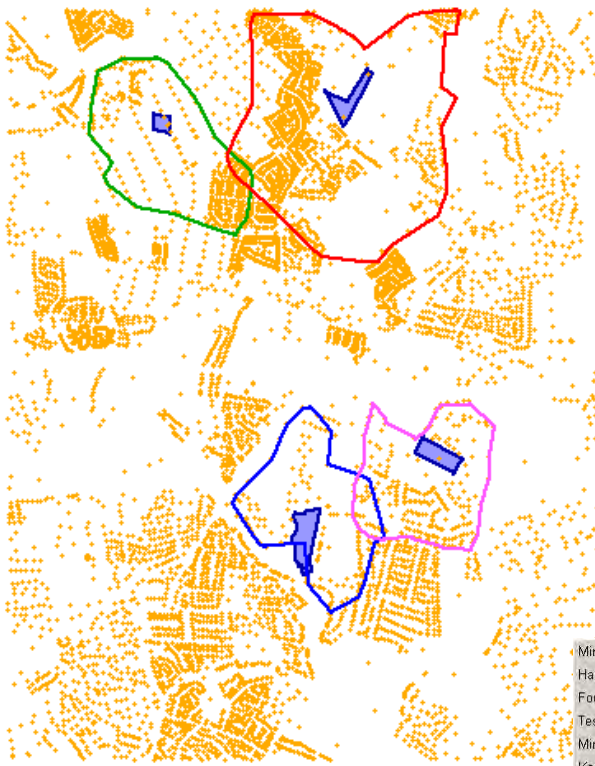
Transferring Attributes in Polygon Fitting



County parks shown over an airphoto of the area surveyed for park attendance.

A potential application for Polygon Fitting is to identify what locations residents voluntarily visit on a regular basis, such as the county parks illustrated here, and determine where new similar facilities should be developed. Each household was asked which park(s) was attended most frequently. The separate by attribute feature in Polygon Fitting was used to reveal the clustering of residents that use the existing parks and the areas where residents do not use existing parks, presumably because they are too far away (see Polygon Fitting results below at left).

The Polygon Fitting process now has the ability to transfer attributes from the points used to generate each polygon to the polygon generated whether or not you separate by attribute. The choices made for object type affects the transfer of attributes as illustrated below.



Property centroids for the same areas shown with park locations and Polygon Fitting results separated by attribute.

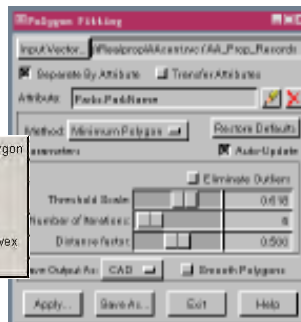
CAD object: 4 polygons, each with 2 attached records

attribute attachment for single or multiple CAD objects

attribute attachment for single vector object

vector object (illustrated right): 6 polygons, 4 with 1 attached record and 2 with 2 attached records

These two polygons would each have two records attached as shown above.



See the section entitled Polygon Fitting in the Process volume of the Online Reference Manual for more information about polygon fitting.