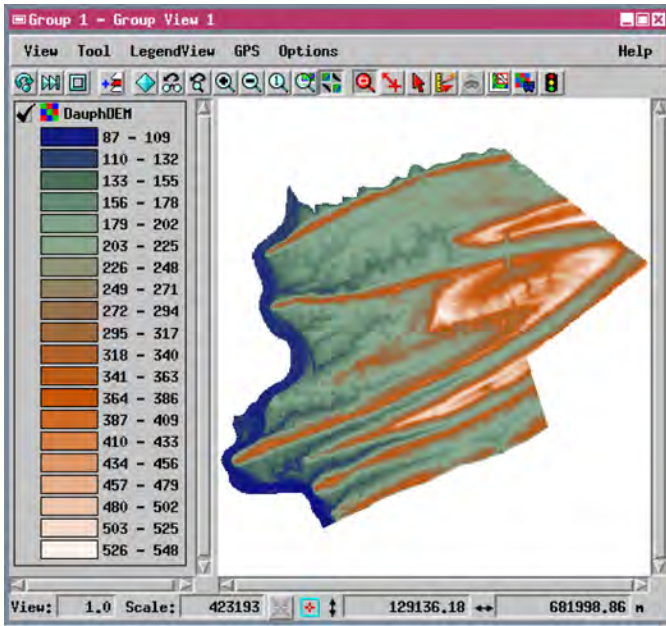
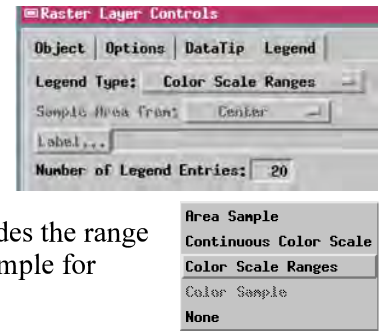


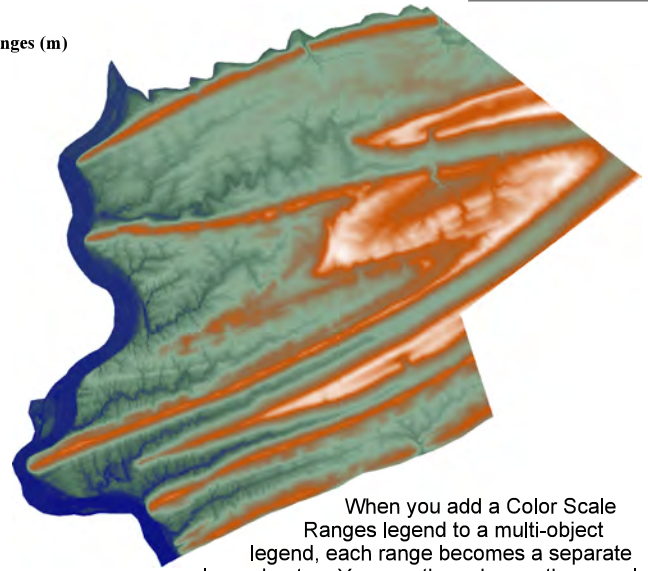
Color Scale Ranges

A new raster legend type, Color Scale Ranges, is now available for raster objects in LegendView and in multi-object legends. A Color Scale Ranges legend is a variant of the previous Color Scale legend type (now called Continuous Color Scale) and is designed for use with elevation rasters and other rasters that represent a continuous mathematical surface. Using the number of legend entries you select (between 4 and 256), the new legend type divides the range of raster values into a number of equal numerical ranges and creates a representative color sample for each range from the raster's color palette. The labels show the range for each sample.



Elevation Ranges (m)

526 - 548
503 - 525
480 - 502
457 - 479
434 - 456
410 - 433
387 - 409
364 - 386
341 - 363
318 - 340
295 - 317
272 - 294
249 - 271
226 - 248
203 - 225
179 - 202
156 - 178
133 - 155
110 - 132
87 - 109



When you add a Color Scale Ranges legend to a multi-object legend, each range becomes a separate legend entry. You can then change the sample size, the vertical spacing between entries, and the order of the range entries.

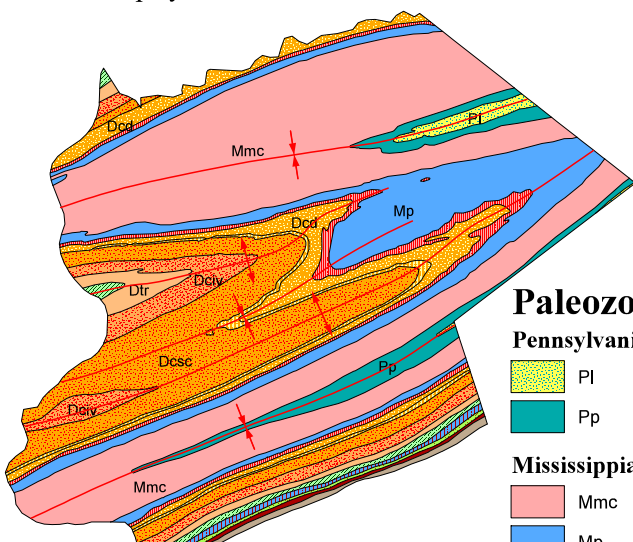
Text Styles in Multi-Object Legends

Multi-object legends can now have any number of text styles in addition to the predefined Normal and Heading styles. Create and name new styles in the Text Style window using the New Style icon button. Any style can be modified by selecting it from the Style menu and changing the desired settings (font, color, etc.). You can also set up one or more tab stops for any text style to automatically align text in columns. The legend below uses four different text styles, and a tab stop was added to the Normal style to align the rock formation names to the right of the map symbol abbreviations.

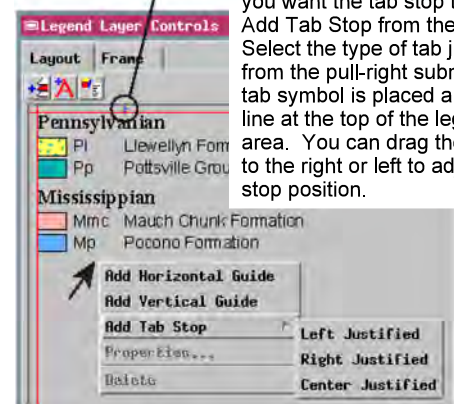


Tab stop symbol

You add tab stops graphically in the Legend Layer Controls window for the current text style (the style of the entry you last selected). To add a tab stop, right-click where you want the tab stop to be and pick Add Tab Stop from the pop-up menu. Select the type of tab justification from the pull-right submenu. A blue tab symbol is placed above the guide line at the top of the legend canvas area. You can drag the tab symbol to the right or left to adjust the tab stop position.



New Style icon button



Paleozoic Rocks

Pennsylvanian

- Pl Llewellyn Formation
- Pp Pottsville Group

Mississippian

- Mmc Mauch Chunk Formation
- Mp Pocono Formation

Mississippian and Devonian

- MDsk Speckly Kopf Formation

Devonian Catskill Formation

- Dcd Duncannon Member
- Dccf Clarks Ferry Member
- Dcsc Sherman Creek Member
- Dcv Irish Valley Member

Silurian

- Sb Bloomsburg Formation
- Sc Clinton Group
- St Tuscarora Formation

Ordovician

