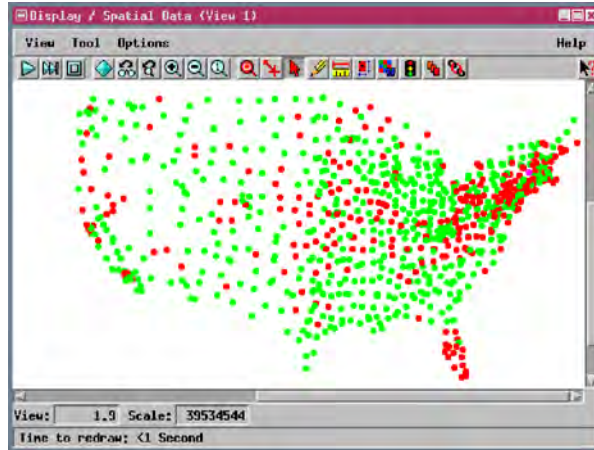
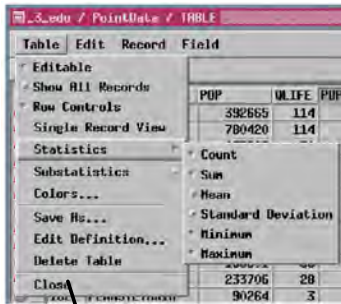


Database Statistics and Plots

Points represent 3-digit zip code locations. Highlighted points (red) were selected by query of the original data table to identify 3-digit zip code areas where people older than 25 make up more than 65% of the population. The same object is illustrated at the bottom of the page with points selected by query of the table created by saving the Sum substatistics.



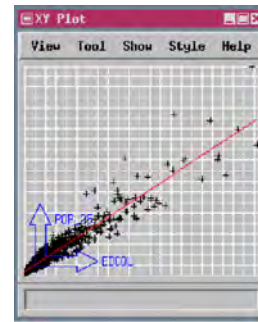
You can examine the relationship between the values in any two fields using the XY Plot feature. Select the field desired for the X axis (click on the field name at the top of the tabular view), then hold down the shift key and select the field for the Y axis. There are many options for display of your XY Plots including how the coordinate values are displayed (as a line or in one of five point shapes, among other choices), and whether the grid or other optional features, such as a regression line or labels, are displayed. In the two sample XY Plots below, one shows a strong positive correlation and the other shows no correlation between values in the two selected fields. In the example on the right, the X axis field is a computed field,



Statistics, substatistics, colors and options for saving new tables are chosen from the File menu.

ZIP3	STNAME	POP	OLIFE	POP_25	EDCOL	EDGRAD	PretCol
195	PENNSYLVANIA	168370	92	110267	15625	5006	14.2
196	PENNSYLVANIA	176222	88	119665	19649	6973	16.4
Σ	PENNSYLVANIA	11881643	7872932	1303591	522086		
028	RHODE ISLAND	646317	116	427471	89270	33824	20.9
029	RHODE ISLAND	357147	100	231485	40660	17702	17.6
Σ	RHODE ISLAND	1003464	658956	129930	51526		

The XY Plot option is active whenever two fields are selected.



College Graduates versus Population > 25



% College Graduates versus Quality of Life

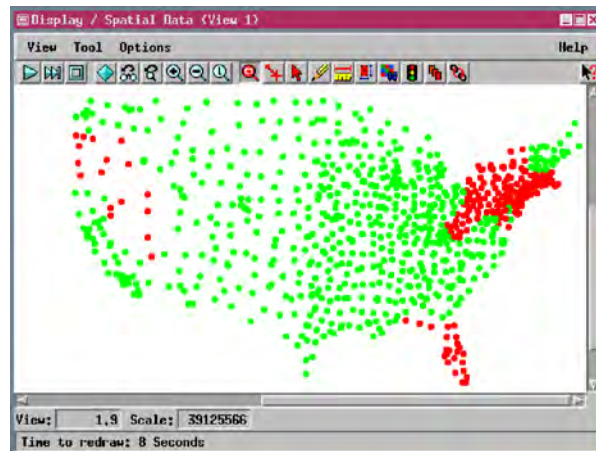
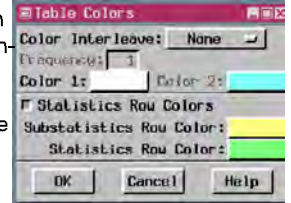
ZIP3	STNAME	POP	OLIFE	POP_25	EDCOL	EDGRAD	PretCol
195	PENNSYLVANIA	168370	92	110267	15625	5006	14.2
196	PENNSYLVANIA	176222	88	119665	19649	6973	16.4
Σ	PENNSYLVANIA	11881643	7872932	1303591	522086		
028	RHODE ISLAND	646317	116	427471	89270	33824	20.9
029	RHODE ISLAND	357147	100	231485	40660	17702	17.6
Σ	RHODE ISLAND	1003464	658956	129930	51526		
290	SOUTH CAROLINA	277827	128	173138	27942	7642	16.1
291	SOUTH CAROLINA	329120	103	200501	30353	8833	15.1
292	SOUTH CAROLINA	269670	100	165304	46610	18093	20.2
293	SOUTH CAROLINA	326181	121	210138	30597	9082	14.6
294	SOUTH CAROLINA	570981	184	340972	63881	20323	18.7
295	SOUTH CAROLINA	464420	174	290563	43430	12244	14.9
296	SOUTH CAROLINA	723013	135	462246	83726	25001	10.1
297	SOUTH CAROLINA	230262	107	143548	21748	6418	15.2
298	SOUTH CAROLINA	175081	108	109241	17418	5380	15.9
299	SOUTH CAROLINA	120148	102	71859	14630	4646	20.4
Σ	SOUTH CAROLINA	3486703	2167590	380335	117672		
570	SOUTH DAKOTA	141575	64	85339	16531	5554	19.4
571	SOUTH DAKOTA	102901	107	64600	16012	3772	24.8
572	SOUTH DAKOTA	70143	34	45253	7065	1295	15.6
573	SOUTH DAKOTA	84637	46	54672	9530	1785	17.4
574	SOUTH DAKOTA	63736	63	41448	8308	1790	20.0
575	SOUTH DAKOTA	53274	41	31850	5793	1305	18.3
576	SOUTH DAKOTA	22790	14	13719	2052	456	15.0
577	SOUTH DAKOTA	156940	117	93019	19437	5161	20.7
Σ	SOUTH DAKOTA	896004	435000	84728	21118		
370	TENNESSEE	545356	129	345175	57476	18317	16.6
371	TENNESSEE	346196	139	219054	28343	8962	12.9
372	TENNESSEE	304690	172	251825	52590	24119	20.9
373	TENNESSEE	437818	117	282289	38552	12632	13.7
374	TENNESSEE	182219	163	121043	21108	6167	17.4
376	TENNESSEE	349228	126	231672	33106	10705	14.3
377	TENNESSEE	277545	78	182884	18686	6226	10.2
378	TENNESSEE	369187	101	245014	26753	10321	10.9
379	TENNESSEE	313764	160	203452	42430	18056	20.9
380	TENNESSEE	263821	96	160501	19597	6841	12.2
381	TENNESSEE	741610	167	459699	82041	32374	10.0
382	TENNESSEE	108389	137	71149	5501	2342	7.7
383	TENNESSEE	245013	150	160095	16017	5487	10.0
384	TENNESSEE	145163	100	93968	8497	3166	9.0
385	TENNESSEE	170470	70	110846	9477	4499	9.5
Σ	TENNESSEE	4876379	3138666	460924	170214		
750	TEXAS	1050472	191	650098	185711	53446	28.6
751	TEXAS	472288	174	290777	47898	14013	16.5
Σ	TEXAS	1522760	361	940875	233609	67459	22.5

Statistics rows (blue) are fixed at the bottom of the tabular view so they are visible regardless of your position in the table. Substatistics rows (yellow) scroll with the table so they immediately follow the fields they summarize.

State	POP	POP_25	ColGrad
NEW MEXICO	1515069	922590	158459
NEW YORK	17990095	11818306	2331945
NORTH CAROLINA	6628637	4253494	800120
NORTH DAKOTA	638800	396550	93439
OHIO	10847115	6824764	1136989
OREGON	2842321	1855369	381108
PENNSYLVANIA	11881643	7872932	1303591
RHODE ISLAND	1003464	658956	129930
SOUTH CAROLINA	3486703	2167590	380335
SOUTH DAKOTA	896004	435000	84728
TENNESSEE	4876379	3138666	460924
TEXAS	17016710	10429590	1961776
UTAH	1722850	897321	160249
VERMONT	562758	357245	80850
VIRGINIA	6187358	3974814	832190
WASHINGTON	4866692	3126390	745394
WEST VIRGINIA	1793477	1171766	132645
WISCONSIN	4891769	3094226	595790
Σ	248709873	158868436	50624492

The new table (near left) saved from the substatistics rows of the larger table (far left) contains records with the field sorted on (in this case, state name) and all numeric fields for which substatistics were calculated.

Colors can be independently set for each record type (statistics, substatistics, and data). You can also choose to interleave two colors for data records.



Points selected by query of table saved from substatistics. All points within a given state will be selected if the state Sum record satisfies the query.