

# Combining Local/Web Maps

In addition to supporting display of any combination of raster, vector, shape, CAD, TIN, and pinmap objects, the Display processes in the TNT products let you select Microsoft Bing Maps layers, web-published tilesets, and layers published by any Web Map Service (WMS) or ArcIMS to combine with your local layers. For example, you can use Bing Maps layers as reference layers when creating and editing your own spatial data in the Spatial Data Editor or when georeferencing. The search capabilities in the TNT products enable you to quickly select from this extensive public collection of map and image layers using text, geographic area, or addresses as your search criterion.

## Combining Local/Web Map Highlights:

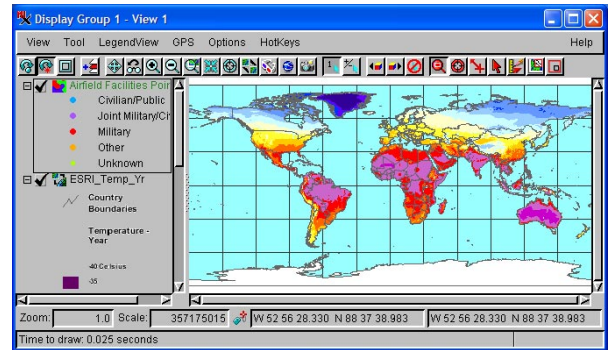
- Combine Bing Maps, web-published tilesets, WMS, ArcIMS, and local geodata layers for custom displays
- Bing Maps and other web layers can be used for reference when creating, editing, and georeferencing local geodata layers
- Select local geodata in a wide variety of formats without importing (if direct use supported) or changing CRS
- Use all Display tools, such as sketching, measuring, and GPS tracking, with web layers
- Search sites for text, by geographic extents, or addresses
- Search servers, layers, or both in a single pass
- Extents of layers in current view automatically entered for geographic extents search
- Sort search results alphabetically by service title or by ground area
- Choose from all layers offered by the selected service, which are then composited into a single display layer
- Save your own list of favorite sites
- View URL for each service as DataTip
- Choose to view with/without relief shading if available as an image dimension
- Choose between anaglyph and other 3D stereo viewing modes

## Display Layers in Google Earth

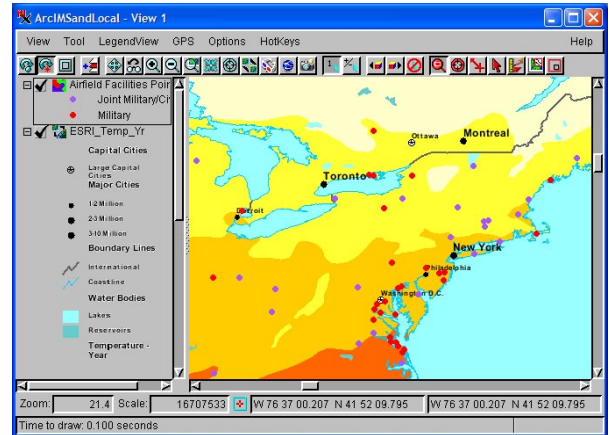
Any map or image layer you can display in the TNT products, including WMS and ArcIMS layers, can be sent as a snapshot or a complete geodata layer for display as a ground overlay in Google Earth. Non-georeferenced layers, such as logos, are rendered as screen overlays.

## Publishing Custom Google Maps on Your Web Site

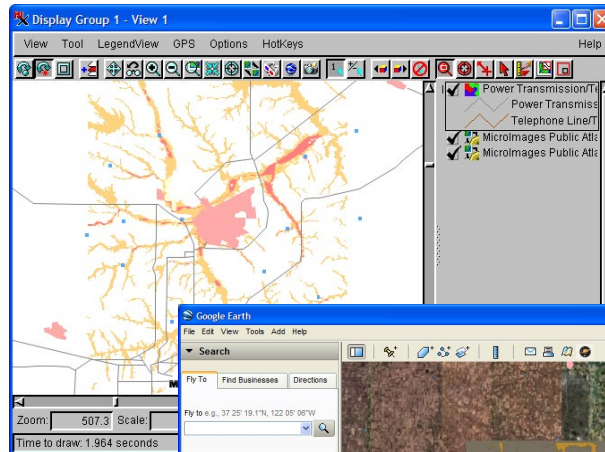
## Locating WMS and ArcIMS layers in TNTmips



ArcIMS and local vector layer



Map scale controls applied to local and ArcIMS layers



WMS and local layers in Spatial Display (left) and Google Earth (below)

