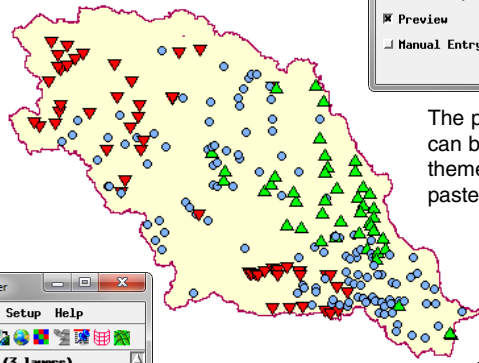
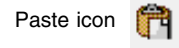
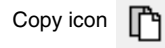
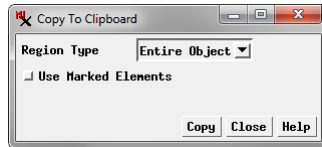


Convert Pinmap to Vector Points

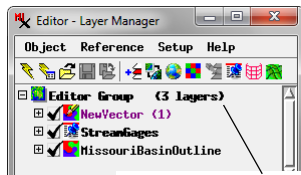
DID YOU KNOW . . . you can convert a pinmap to vector points by pasting the pinmap into a vector object?

What Converting a Pinmap to Vector Points Gives You

- Create point elements in a vector object from a database pinmap
- Generate point database for all selected pins
- Keep direct attachments between the points and the database records
- Style pins by attribute or theme once in vector format

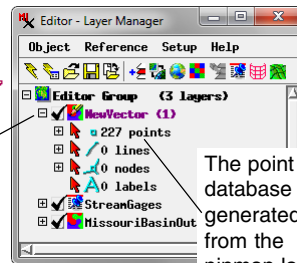


The points converted from pins can be styled by attribute or by theme after the pinmap layer is pasted into a vector object.



The pinmap layer is the active layer for copying the entire object or the selected pins.

The vector layer is the active layer for pasting the copied pinmap.



The point database was generated from the pinmap layer pasted.

How to Convert a Pinmap to Vector Points

- Select Main/Edit from the menubar.
- Choose Layer/Database Pinmap from the Reference menu.
- Select the database table to pinmap.
- Click on the Copy icon in the Editor View window.
- Set the Region Type to Entire Object and click on the Copy button.
- Open a vector layer to edit or create a new vector object.
- Click on the Paste icon to open the Paste Placement Tool window.
- Click on the Paste button and save the vector object.

WANT TO KNOW MORE?

See the tutorial booklet entitled:

Pin Mapping

