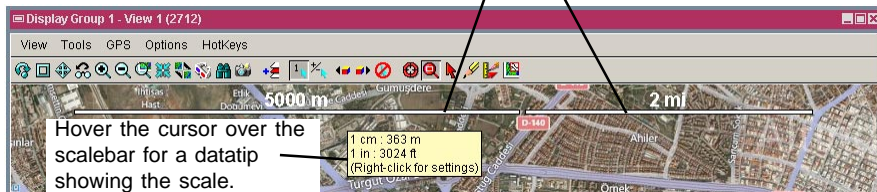
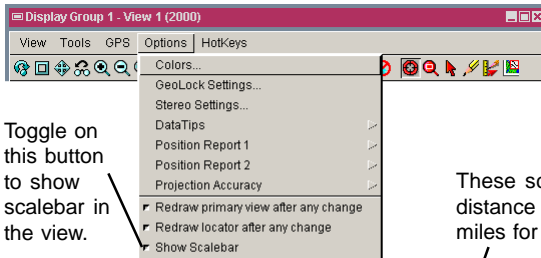


Add Scalebar to View

DID YOU KNOW . . . you can add a scalebar to the display view?

What Adding a Scalebar to a View Gives You

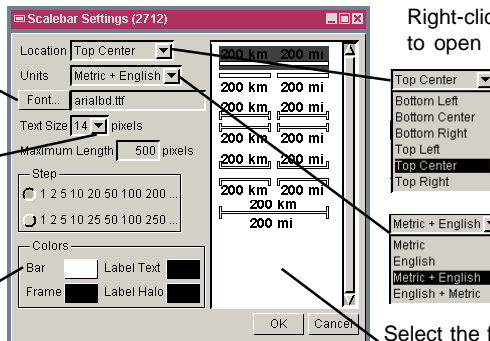
- Provide a graphic scale for the geospatial object(s) displayed
- Graphic visualization of the scale in English, Metric, or both units
- Choose the location of the scalebar in the view
- Control the scalebar length, label font, and colors



Click to select a font for the label text.

Click to select text size for the label.

Use this panel to change the color of the bar, frame, label text and/or halo.



How to Add a Scalebar to a View

- In the View window, click on Options and toggle on the Show Scalebar button.
- Hover the cursor over the scalebar to see the DataTip.
- Right-click on a scalebar to make desired changes to the Scalebar Settings.

WANT TO KNOW MORE?

Search the information available on

MicroImages' Website

