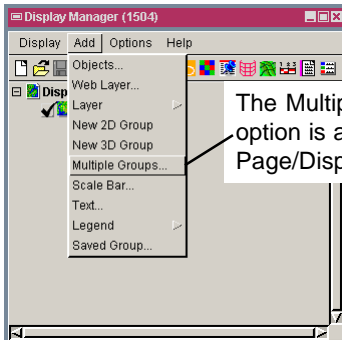


Add Multiple Groups to a Layout

DID YOU KNOW . . . you can add multiple groups to a layout at once for any number of spatial data objects selected?

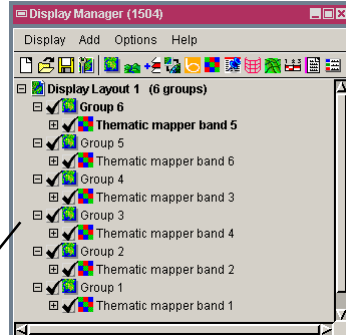
What Adding Multiple Groups to a Layout Gives You

- Quickly add a number of layers for side by side comparison
- Automatically create a new group for each of the spatial data objects selected
- Display any number of spatial data objects in its own separate groups at once

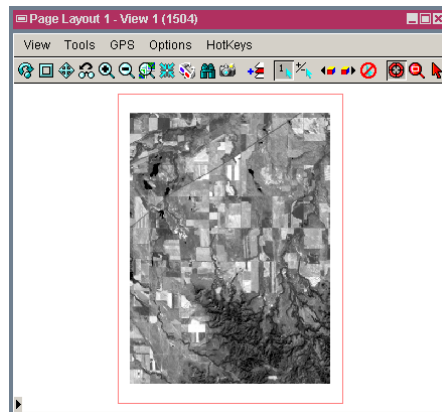


The Multiple Groups option is active for Page/Display layouts.

A new group is created for each of the spatial data objects selected.



When multiple groups are added to a display layout, groups are automatically tiled and have no specific attachments.



When multiple groups are added to a page layout, all groups have an initial group attachment that centers them on the page.

How to Add Multiple Groups to a Layout

- In the Display Manager, click on the New icon and select Display Layout or Page Layout from the menu.
- Select Add / Multiple Groups and add all the desired objects to display when prompted.

WANT TO KNOW MORE?



See the Tutorial Booklet entitled
Making Map Layouts

