

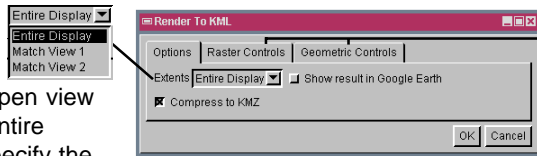
Create KML/KMZ Files from Map Layouts

DID YOU KNOW . . . you can create a KML or KMZ file from the geospatial layers in your groups or map layouts?

What Creating KML/KMZ Files from Map Layouts Gives You

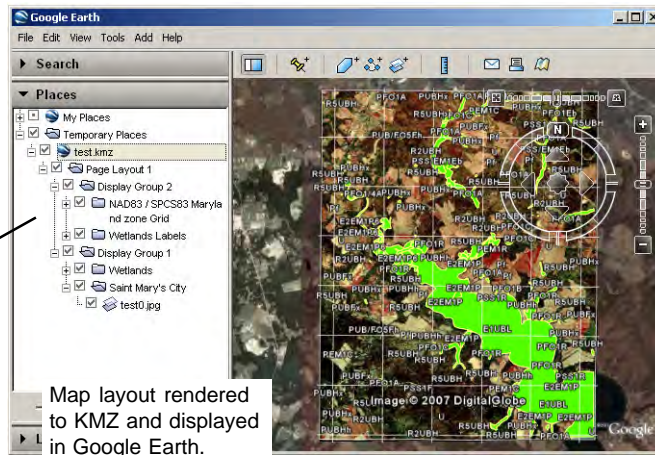
- Match the extents of any open 2D or 3D window or match the inclusive extents of all layers in a view
- Set the cell size of the raster objects rendered to KML
- Set the coordinate accuracy of the vertices rendered to KML
- Control group(s) and the spatial objects in those groups individually in Google Earth and Google Maps

Select any open view window or Entire Display to specify the extents of the KML file.



These panels appear only when there is a raster or geometric object added to the group/layout.

When a KML/KMZ file is displayed in Google Earth, each group in the layout is listed in the Places panel as an expandable folder, which provides each original TNT object in that group in a separate sub-folder. Each sub-folder lets you turn the associated object type on and off independently.



Map layout rendered to KMZ and displayed in Google Earth.

How to Create KML/KMZ Files from Map Layouts

- Choose *Display/Render to KML* to open the *Render to KML* window.
- Use the *Options* panel to specify the extents of the KML/KMZ file.
- Click on the *OK* button to create a KML/KMZ file with default settings; or
- Click on the *Geometric Controls* tab to change the coordinate accuracy value for the geometric objects.
- Click on the *Raster Controls* tab to change the *Cell Value* and *Format Type* for the raster objects.

WANT TO KNOW MORE?

See the *Technical Guide* entitled: *Spatial Display:*

Render Map Layouts to KML

