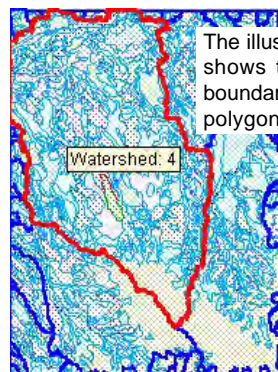


# Save Database Table Substatistics

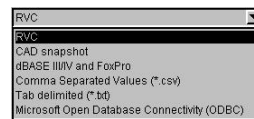
**DID YOU KNOW** . . . you can save substatistics shown in tabular view in a new database table?

## What Saving Database Table Substatistics Gives You

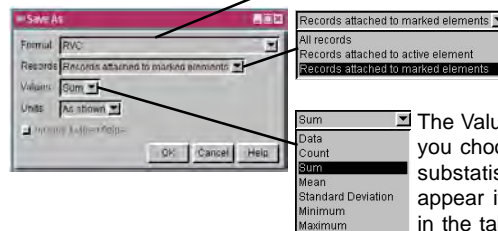
- Save all or any substatistics of the following types: count, sum, mean, standard deviation, minimum, and maximum
- Save substatistics in various formats or in a new database table
- Choose to save substatistics of all or selected records



The illustration on the left shows the watershed boundaries over soil type polygons.



The Format menu lets you choose the format of the saved substatistics.



The Values menu lets you choose the type of substatistics, which only appear if they are shown in the tabular view.

The watershed selected has 423 records of soil type classes. The sum of the areas of each land use class is shown in the database table below.

The sum of the areas of each soil type class in the selected watershed is saved as a new database table as shown below.

Watershed_ID	Class	Area	Percent
4	VeC	26358.22	0.04
4	VeC	125500.75	0.21
4	VeC	51951.47	0.08
Σ	VeC	2746696.65	4.57
4	WATER	73496.86	0.12
4	WATER	10562.32	0.02
4	WATER	63644.53	0.11
4	WATER	3410.69	0.01
4	WATER	8172.63	0.01
Σ	WATER	159287.03	0.26
4	Wx	182510.40	0.30
4	Wx	182510.40	0.30
Σ		60144259.98	99.98

423 of 1312 records shown - 423 related to selected elements

Class	Area	Percent
BuF	47556.87	0.08
BoD	1049226.70	1.74
BnD	416024.45	0.69
BnB	971008.26	1.61
BgF	124703.36	0.21
BgD	819935.40	1.36
BgB	2831819.28	4.71
Bg	276046.95	0.46
Bf	518561.74	0.86
Bd	456100.41	0.76
Bc	46905.18	0.08
AcD2	13741.51	0.02
Σ	60144260.00	99.95

60 of 60 records shown

## How to Save Database Table Substatistics

- Click on the database table checkbox to open the database table.
- Select Table/Save As from the menu to open the Save As window.
- Select the desired type of the substatistics listed on the Values menu.
- Change the other settings as desired and click on OK.

**WANT TO KNOW MORE?**



See the tutorial booklet entitled:  
**Managing Relational Databases**

