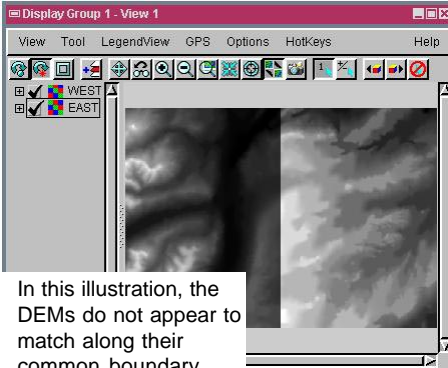


Copy Contrast Tables

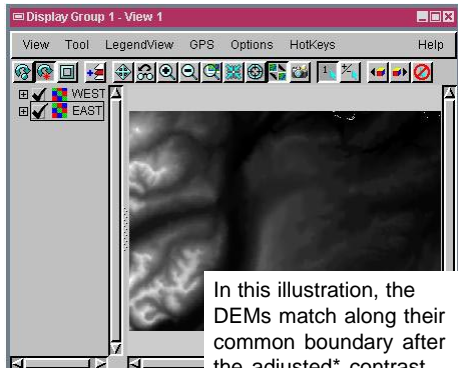
DID YOU KNOW . . . you can copy a raster's contrast table to another raster for better visualisation of a set of adjacent rasters?

What Copying Contrast Tables Gives You

- Match the display colors of a set of adjacent rasters
- Use one adjusted contrast table for all other rasters in a set
- Save time when adjusting the contrast of adjacent rasters



In this illustration, the DEMs do not appear to match along their common boundary since the same gray shades correspond to different elevation ranges in each raster.



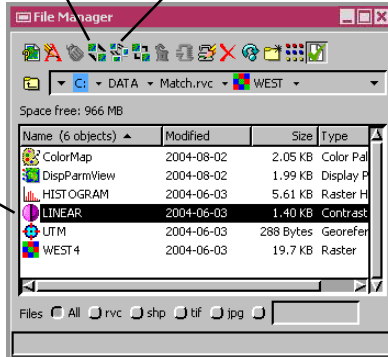
In this illustration, the DEMs match along their common boundary after the adjusted* contrast table of the raster WEST was copied to the raster EAST.



Copy icon



Replicate icon



contrast table subobject

* Before copying the contrast table, you need to adjust the contrast by setting the Input Range values of the rasters to the overall range of the raster set. (In the Display Manager, select Raster Histogram from the right mouse button menu to determine the overall range.)

How to Copy Contrast Tables

- Select **Tools/File Manager** from the menubar.
- Navigate to the adjusted contrast table under the raster object.
- Select contrast table and click on the **Copy** button if only one other raster in set, or click on the **Replicate** button for larger sets.
- Select the raster object(s) to copy the contrast table to when prompted.

WANT TO KNOW MORE?

See the tutorial booklet entitled:

Analyzing Terrain and Surfaces

