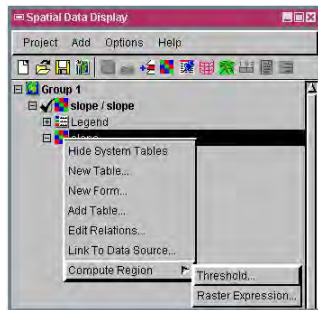


Create Regions by Thresholding

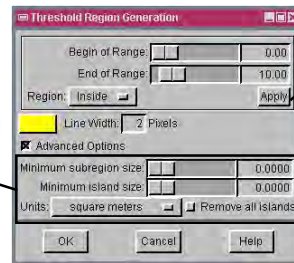
DID YOU KNOW . . . you can compute regions using a threshold range of raster cell values?

What Creating Regions by Thresholding Gives You

- Set the beginning and ending range of cell values for threshold
- Determine whether the region is generated inside or outside the threshold
- Set minimum subregion and island size
- Preview the temporary region generated

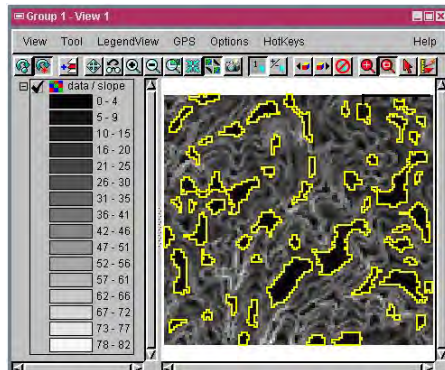


The Advanced Options panel lets you set minimum subregion and island size.

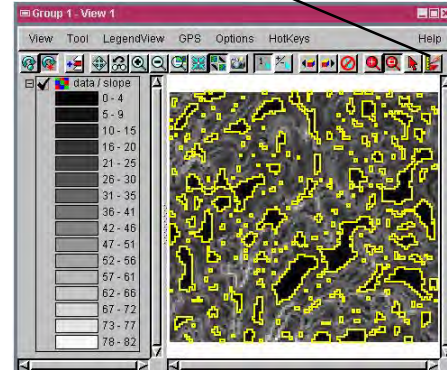


The Apply button lets you preview the region to be generated.

GeoToolbox icon



The threshold region shown above does not include subregions smaller than 3000 square meters.



The threshold region shown above includes all subregions without size restriction.

How to Create Regions by Thresholding

- Add a grayscale raster object and click on the + to show the raster details.
- Right-click on the raster name or icon.
- Choose Compute Region/Threshold from the option menu that opens.
- The Threshold Region Generation window opens.
- Move the sliders or enter specific values to set the threshold range.
- Click on Apply to preview the temporary region.
- Click on OK to generate the region and save it using GeoToolbox.

WANT TO KNOW MORE?

See the section entitled *Threshold Regions* in the *Display* volume of the:

Online Reference Manual

