

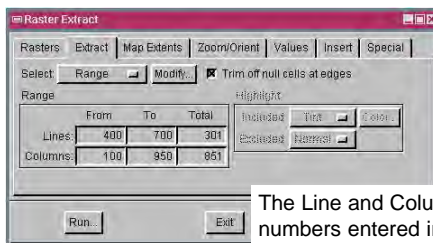
Raster Extraction By Range

DID YOU KNOW . . . you can select a range of lines and columns to extract from a raster object?

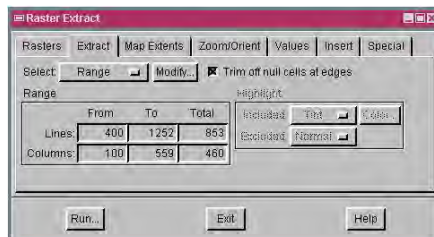
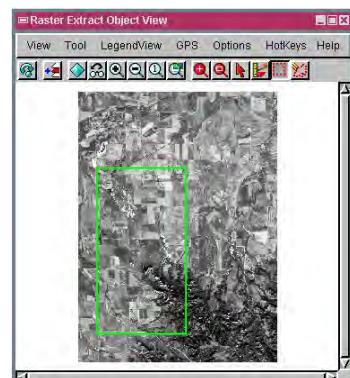
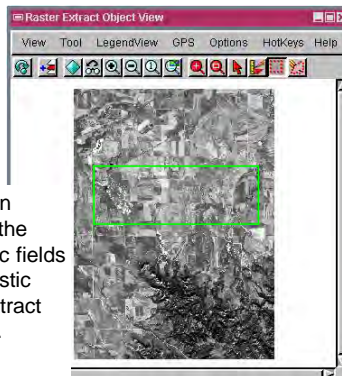
What Extracting Rasters by Range Gives You

- Enter line and column numbers to define an extraction area
- See the line and column entries as an elastic box in the View window
- Draw, resize, and move the elastic box to define an extraction area
- Automatic adjustment of line and column entries based on the elastic box

The Line and Column totals automatically adjust as the Line and Column numbers are entered in the From and To numeric fields.



The Line and Column numbers entered in the From and To numeric fields are shown as an elastic box in the Raster Extract Object View window.



When you draw, resize, or move the elastic box, the Range numeric fields automatically adjust.

How to Extract Rasters by Range

- Select Raster/Extract from the menubar.
- Select the raster object(s) you want to extract from when prompted.
- Click on the Extract tab in the Raster Extract window.
- Choose the Range option from the Select menu.
- Enter Line and Column numbers in the From and To numeric fields.
- Resize or move the elastic box in the View window if required.
- Click on the Run button.



WANT TO KNOW MORE?

See the section entitled Extracting by Range in the Process volume of the:

Online Reference Manual

