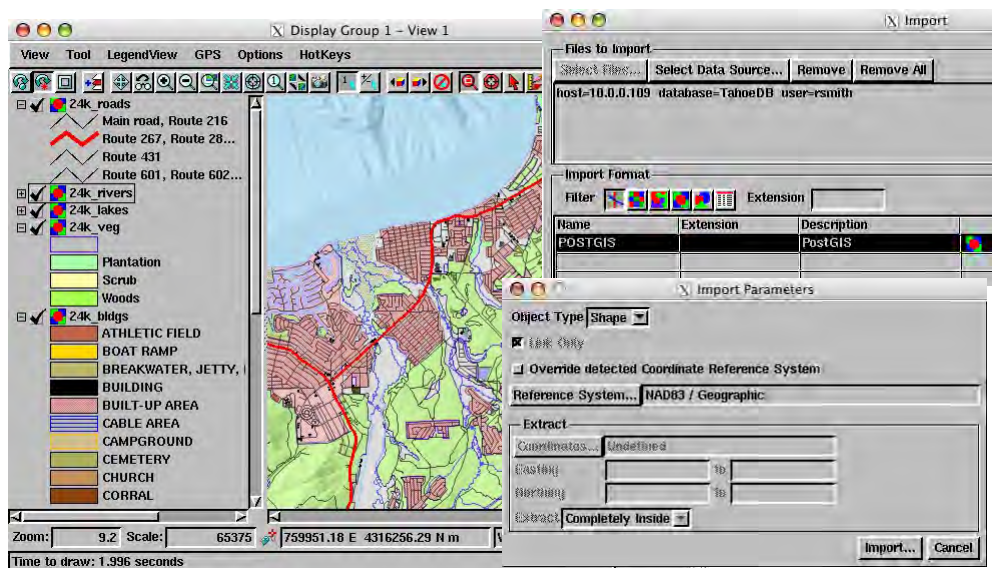


# Link to PostGIS Spatial Tables

**DID YOU KNOW . . .** you can link to spatial objects in PostGIS (PostgreSQL database) spatial tables?

## What Linking to PostGIS Spatial Tables Gives You

- Maintain spatial data and attributes in a server-based relational database
- Point, line, and polygon geometries (one type per spatial table)
- Get a separate linked object for each spatial table
- Data transparently shared with other users and software
- Linked spatial data fully portable within the server network
- Database log in required only when first establishing the link
- Base element styling and DataTips on attributes in the linked spatial table



## How to Link to PostGIS Spatial Tables

- Choose the **POSTGIS** format in the *Import* process.
- Press **Select Data Source** and log in to the desired database and schema.
- Press the **Next** button.
- Choose the **Shape** object type in the *Import Parameters* window.
- Press the **Import** button.
- Select the **Project File** and object names for the linked PostGIS spatial tables.



**WANT TO KNOW MORE?**

See the tutorial booklet:  
**Importing Geodata**

