

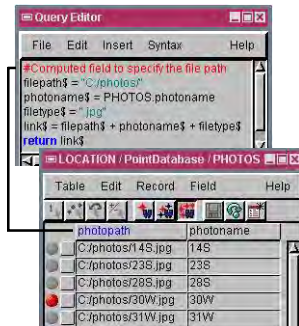
Link to External Files Using Attributes

DID YOU KNOW . . . you can link to external files associated with a large number of elements using element attributes?

What Linking to External Files Using Attributes Gives You

- Ability to link large number of elements to unique files
- Automatically enter file paths for each element
- Ability to launch the external files you link to

A string expression field is created to automatically generate the file path entries.



A record that identifies the corresponding photo is attached to each point.



Clicking on a point element opens the JPEG file that shows the photo taken at that point.

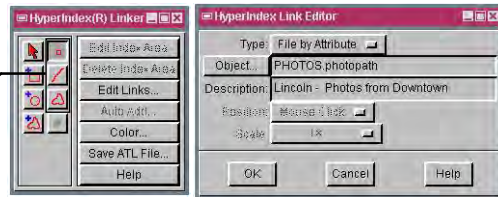


HyperIndex Navigator icon



HyperIndex Linker icon

The Vector Element icons (Vector Point, Line, and Polygon)



Setting Type to File by Attribute for the selected point element automatically links all point elements to the external files listed in the selected field.

How to Link to External Files Using Attributes

- Create a computed field to specify the path for external files.
- Click on the vector element icon in the HyperIndex Linker window.
- Click on one of the vector elements.
- Click on the Add button in the HyperIndex Link Selection window.
- Set the Type to File by Attribute and click on the Object button.
- Select the database table and computed field in the table list.
- Click on OK and close the HyperIndex Linker window.



WANT TO KNOW MORE?

See the tutorial booklet entitled: Understanding and
Maintaining Project Files

