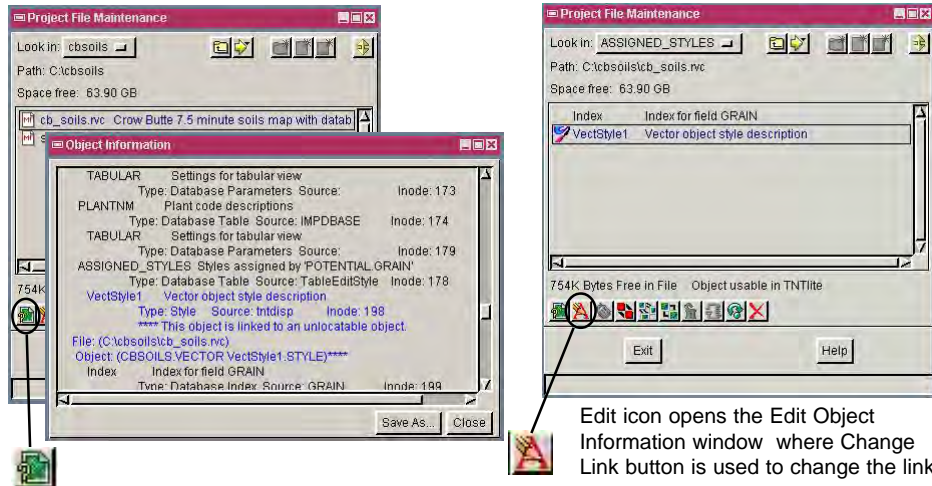


Adjusting Links for Styles

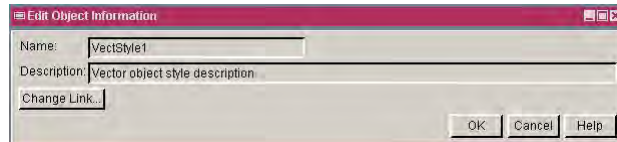
DID YOU KNOW . . . you can use *Project File Maintenance* to adjust the links for styles? (Links are the connections between the components needed to fully define each geodata object in a Project File.)

What Adjusting Links Gives You

- Identify objects with links to style objects that cannot be located
- Navigate to missing style objects
- Remake links that are missing or moved
- Change existing links



Info icon opens the Object Information window where objects linked to style objects that cannot be located are highlighted in blue.



How to Adjust Links with Project File Maintenance

- Choose *Tools/Manage Project Files* from the menubar.
- Click on the *Info* icon to open *Object Information* window.
- Scroll this window to a style object highlighted in blue.
- Use the *Project File Maintenance* window to navigate to this blue name.
- Click on the *Edit* icon to open the *Edit Object Information* window.
- Click on the *Change Link* button to open the standard *Object Select* window.
- Locate and select missing or moved style object to be linked.
- Click *OK* in the *Edit Object Information* window.

WANT TO KNOW MORE?



See the tutorial booklet entitled: *Understanding and Maintaining Project Files*

