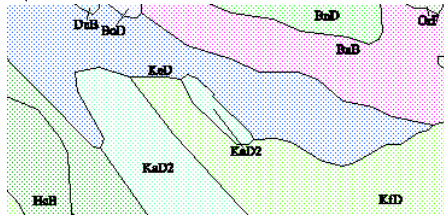
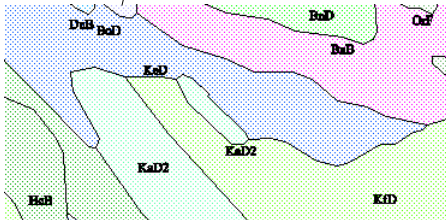
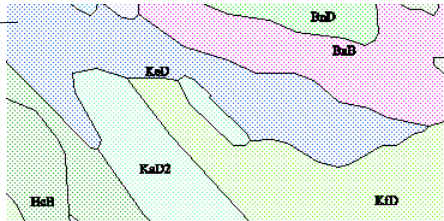
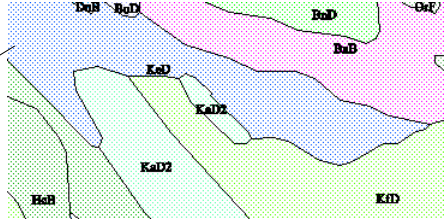
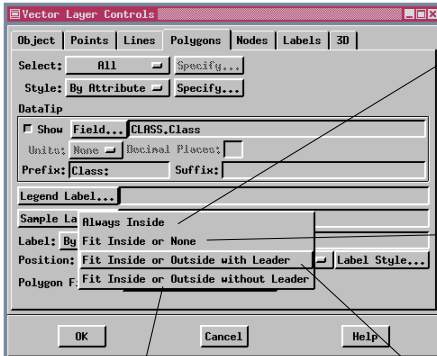


# Automatic Polygon Labels & Leader Lines

**DID YOU KNOW** . . . you can control label position and the use of leader lines for automatic (on-the-fly) polygon labels?

## What Automatic Polygon Labels and Leader Lines Give You

- Quick labeling without using the Editor
- Labels in any process with a View window
- Optional leader lines with label placement outside polygon
- Force labels to be inside polygon



## How to Use Automatic Polygon Labels

- Select the Polygon tabbed panel of the Vector Layer Controls and set the Label option button to By Attribute or By Script.
- Choose the labeling attribute or enter the script.
- Specify the desired option for label Position.
- Redraw if necessary.
- The same label position options are also available when auto-generating polygon label elements in the Editor.

## WANT TO KNOW MORE?

Search the information available on

**MicroImages' Web Site**

