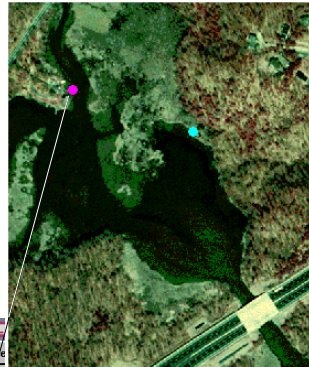
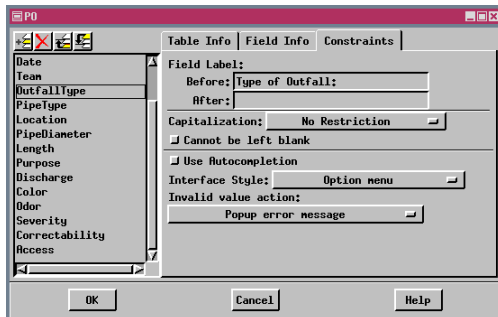


Operational Database Constraints

DID YOU KNOW . . . you can place constraints on fields to control how they are filled out?

What Functional Database Constraints Give You

- Selection from a pick list of allowable entries
- Control the range of acceptable values
- Autocompletion based on first few characters entered
- Specification of default value to be shown for each field
- Opportunity to fill all fields by selection to avoid keyboard use
- Creation of informative error messages for incorrect entries



In this example, points are added to a pinmap.

Field constraints apply only to data entry in single record view. Constraints are part of the table definition.

How to Use Functional Database Constraints

- Create tables with pick list choices.
- Create tables with autocompletion values.
- Create table with field constraints and set as desired.
- Open table in single record view.
- Add or select elements and choose from option menus or enter data from the keyboard as appropriate.

OPERATIONAL DATABASE CONSTRAINTS

WANT TO KNOW MORE?

See the tutorial booklet entitled:

Managing Relational Databases

