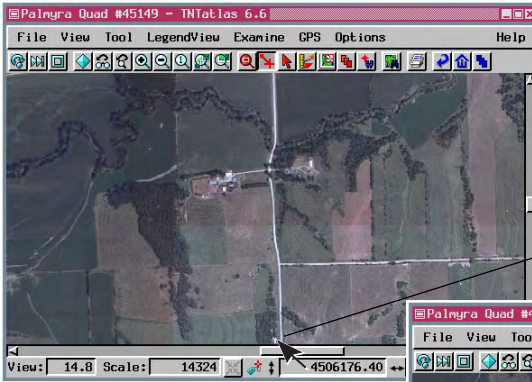


Recenter and Zoom on Cursor Location

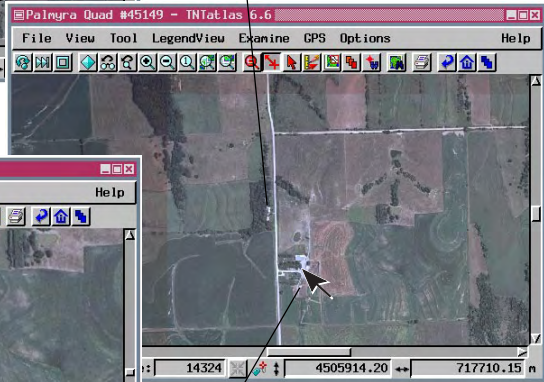
DID YOU KNOW . . . you can recenter and zoom in and out on the cursor location using the space bar, +, and - keys, respectively ?

What the Keyboard and Cursor Give You

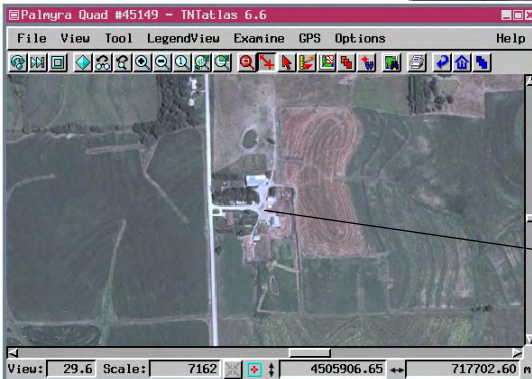
- Recenter on cursor location when you press the space bar
- Zoom in on cursor location when you press the plus key <+>
- Zoom out on the cursor location when you press the minus key <->



To recenter the View over the building at the bottom of the current View (left), position the tip of the arrow over the building, and press the space bar.



To zoom up and center on a location in the image, position the cursor over it and press the plus key.



How to Use the Keyboard and Cursor

- Position the cursor over the location you want to be the center of the next view.
- Press the space bar, plus, or minus key.
- This feature is available in TNTmips, TNTedit, TNTview, TNTAtlas for X and TNTAtlas for Windows.

WANT TO KNOW MORE?

See the Quick Guide:

Hot Keys

