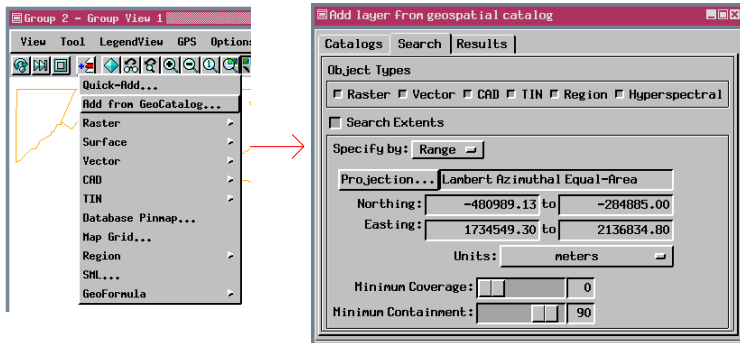


GeoCatalogs

DID YOU KNOW ... you can select data by its geographic location from your hundreds or thousands of Project Files?

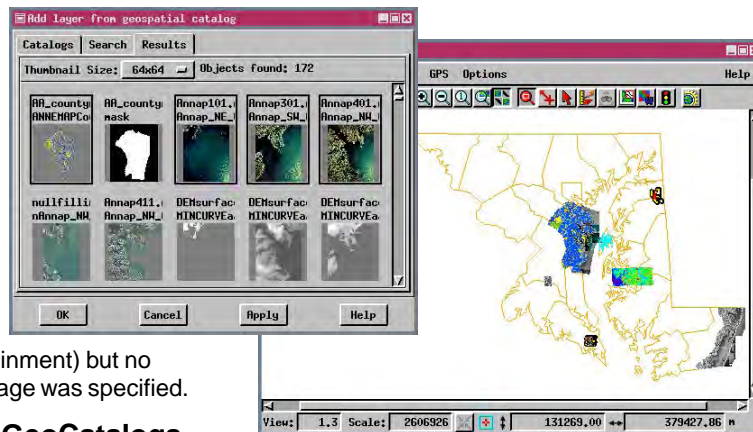
What GeoCatalogs Give You

- Selection of objects by geographic extents
- Geographic extents defined by currently displayed object(s), selected region, or center point coordinates
- Control of the type of TNT objects located



The group's geographic extents automatically define the range, or you can select a region or enter a point location. After setting new parameters, click on the Results tab to search again.

The geographic extents were defined by the county map of Maryland. Objects located were required to have at least 90% of their extents within this area (containment) but no minimum coverage was specified.



How to Use GeoCatalogs

- Create a GeoCatalog of data you want to access by geographic location (Support / Geospatial Catalog Manager).
- Choose Add Layer / Add from GeoCatalog from the View window toolbar.
- Select the appropriate GeoCatalog and define object type, extents, coverage, and containment.
- Choose Add Layer / Add from GeoCatalog, select the objects you want, and click Apply (GeoCatalog window remains open) or OK (window closes).

WANT TO KNOW MORE?

See the sections on GeoCatalogs in the:
Online Reference Manual



GEOCATALOGS

