

CartoScripts

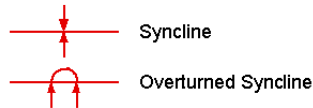
DID YOU KNOW . . . you can use CartoScripts to design and draw custom map symbols for vector points and lines?

What CartoScripts Give You

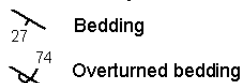
- Full range of drawing functions to create custom map symbols
- Line navigation functions let you repeat symbols along lines
- Vary symbol styling and / or orientation based on database attributes
- Add labels to symbols using text from database
- Create CartoScript style samples in legends



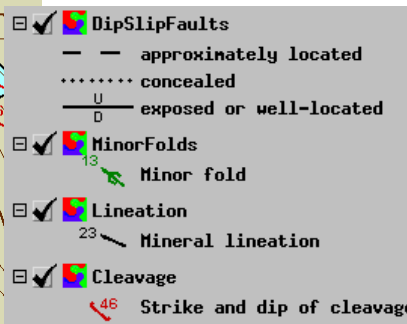
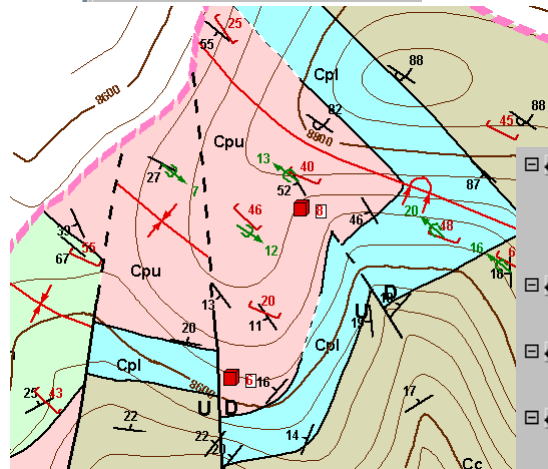
Folds



Strike and Dip



CartoScript samples in print layout



CartoScript samples in LegendView

How CartoScripts Work

- Choose Style: By Script for point or line elements in a vector object.
- Press Style: Specify to open the Query Editor window.
- Use the CartoScript functions to define drawing operations and navigate lines.
- Include references to needed database attributes in the form TABLE.FIELD.
- The script is evaluated independently for each element.
- To create legend samples, select a representative vector element, right-click, and choose Add Active to Legend from the pop-up menu.

CARTOSCRIPTS



WANT TO KNOW MORE?

See the tutorial booklet:

Using CartoScripts

