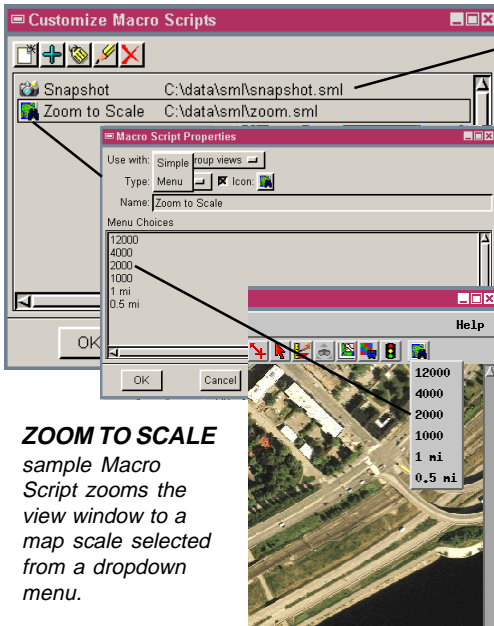


# Macro Scripts

**DID YOU KNOW** . . . that SML Macro Scripts automatically operate on geodata in a View window?

## What Macro Scripts Give You

- Execute script from an icon button on any View window
- Optional drop-down menu for the icon button to choose program options
- Access any characteristics of View layers: extents, projection, zoom, ...
- Operate on objects in the View or objects covering the same geographic area
- Pass selected data to external programs



**ZOOM TO SCALE**  
sample Macro Script zooms the view window to a map scale selected from a dropdown menu.



**SNAPSHOT**  
sample Macro Script saves a snapshot of the view window, using a file format selected from a dropdown menu.



## How Macro Scripts Work

- Choose Options / Scripts / Macro Scripts from any View window.
- Press the Add icon button and select a script.
- Or to create a new Macro Script press the New icon to open the Query Editor window.
- Add your own code to define the operation.
- Choose whether to set up a simple icon button or a menu button.
- Enter the list of menu choices if needed.
- The script icon button appears on the toolbar of all your TNT View windows.

## WANT TO KNOW MORE?

See the tutorial booklet entitled:

# Writing Scripts with SML

