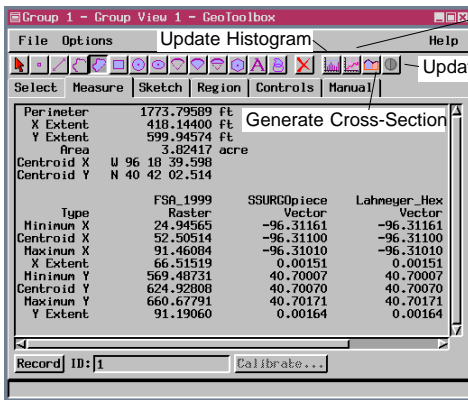


# GeoToolbox

**DID YOU KNOW . . .** you can select from many tools for sketching, measuring, and region management?

## What the GeoToolbox Gives You

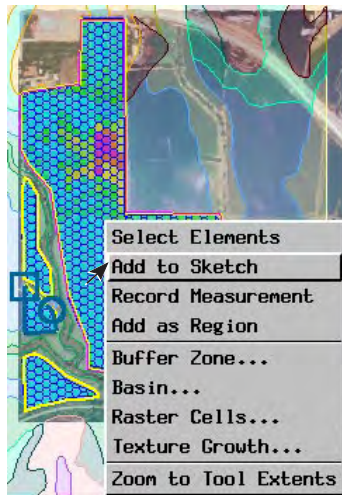
- Integrated sketching and measuring with measurements immediately available for any shape sketched
- Save any line or polygon in a sketch object
- Treat GPS input or log files as points, lines, or polygons
- Use of tools for element selection
- Region creation and management
- Update Histogram, Profile, Cross-Section, and Update Contrast tools



Open Profile View

Update Contrast

Here you are viewing measurements for a polygon drawn to be added to a sketch layer. Alternatively or additionally, you could choose to create a region from the drawn polygon, use it to select elements, or record the measurements in a text file.



You choose the units of measure for length, area, angle, position, and elevation. You have the option of showing layer specific information for all layers, the active layer or no layers. If a surface layer has been added, you can also show true surface distance, surface area, and the area surface range.

## How to Use the GeoToolbox

- Click on the GeoToolbox icon in the View window.
- Choose the graphic tool you want to use and a tabbed panel.
- Switch between panels to view information and perform operations.
- Use the right mouse button to choose an action for a shape.

## WANT TO KNOW MORE?

See the tutorial booklet entitled:

# Sketching and Measuring

