

# Virtual Desktop

***DID YOU KNOW . . .*** that using a large X Server workspace lets you create and use large View windows?

## What a Virtual Desktop Gives You

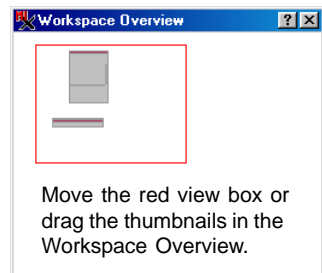
- A large workspace for increased productivity
- Stretch very large View windows across the entire workspace
- Resize a View window for a full view of its geodata at a chosen map scale
- A Workspace Overview provides tools for moving all windows around in the workspace



More memory allows you to have large View windows in the display process.

## How to Set Up Your Large Workspace

- Select Preferences from the MicrolImages X Server title bar menu.
- Choose a Workspace Size in the MicrolImages X Server Preferences dialog. (Your changes will take effect in the next session.)
- Use the Workspace Overview window to move around in the workspace.
- Resize a View window by selecting Resize To from its Options menu. If you have 128 Mb of RAM, try Double Height and Width.



Move the red view box or drag the thumbnails in the Workspace Overview.

## WANT TO KNOW MORE?

Search the information available on  
**MicrolImages' Web Site**

